

COMPLETE GUIDE FOR COMPUTER HARDWARE NEWBIES



Part I : Mastering Computer Hardware

Part 2 : Assembling and disassembling hardware

Part 3 : Installing Windows

Part 4 : Troubleshooting

Part I : Mastering Computer Hardware

Computer chhe siam ve i tum a nih chuan a part mal te te kha enge an nih leh an hnathawh dan i hriat ve phawt a ngai a, hemi kal kan a thiam i tum a nih chuan thiamna awmze neilo ka tihsak ang che. A chhan chu lo khawih ve thei nial nual mah la, a part te leh a hnathawh dan i hriat mumal si loh chuan awmzia tak tak a nei thei lo a ni. Mizote hian a bulthut atanga thiam lova a ler atanga thiam nghal mai hi kan tum thin a, amaherawhchu a bulthut atang ngei hian tan la ka duhpui khawp mai che. Tunah a awlsam thei ang ber leh hriat nuam thei ang turin kan han zir ang a, a chipchiar lemlo thung. A tlangpui kan hrut thuak thuak ang. i lo luhchilh tan teh ang.

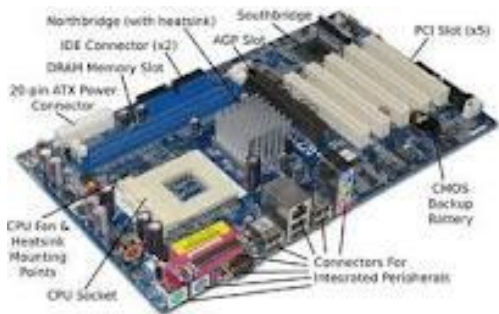
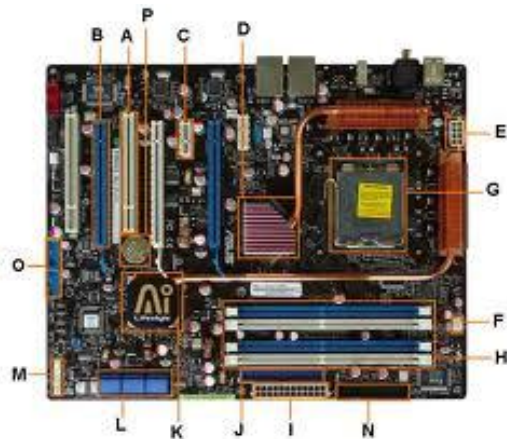
1. **SMPS** : Switched Mode Power Supply emaw Switching Mode Power Supply tih a ni a, Computer a current luhna khawlpui ber a ni a, SMPS a chhiat chuan computer a nung theilo a, chuvangin a tello chuan awmze neilo mai a ni. SMPS hnathawh ber chu in a kan power supply hmuh pangngai hi AC Current a ni a, chu chu DC Current ah a lo let thin a, kan khawlin a mamawh ang tawkin a lo sem darh ta thin a ni.



A chung a lem kan hmuh hi SMPS chu a ni a, Power Outlet atanga kan current hmuh kha DC Current ah a lo thlakin Motherboard-ahte, Hard Disk ah te a lo semdarh thin a, SMPS hi Watt hrang hrang a awm a, a tlangpuiin 450W vel hi kan hman tlangpui a ni a, kan component hman mil tawh SMPS thlan thiam hi a pawimawh hle. SMPS hian AC Current kha DC Current ah a lo let kan tih tawh kha, a power filter azir hian khawh a smooth hleih ve thei viau a, fluctuate awm thin leh engemaw

ah pawh tha bik deuh chi hman tur a awm a, aman erawh a to deuh hlek thung.

2. **Motherboard** : Computer I han hawng chiah a, a lo inthlunkhawmna hmunpui ber Printed Circuit Board lian deuh I hmu ang a, kha kha motherboard chu a ni. I motherboard-ah khan Processor vuahna turte, RAM vuahna te, Graphic Card etc vuahna te a lo awm ang a, motherboard azirin RAM leh processor hman theih a inang lo thin. Chubakah motherboard tha ah chuan I khawl a smooth in a chak dawn a, chuvangin khawl I lei dawn a I ngaih pawimawh hmasak ber tur a ni.

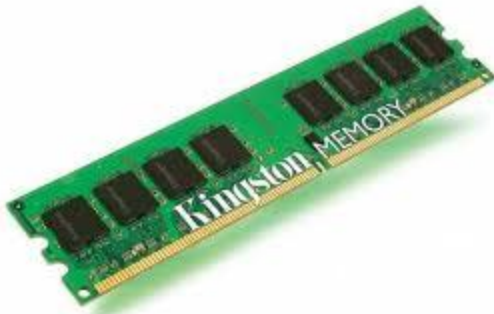


3. **Processor** : Computer thluak bur ber a tih theih awm e. Hnathawktu ber a ni a, transistor tam tak inbelkhawmin a siamchhuah a ni a, silicon hmang a siam a ni. I computer a tih tur command i pek zawng zawng lo thawktu ber a nih avangin



Processor tha leh thalo kar a hla thei hle a, chuvangin i hman dan tur a zir a processor i thlan thiam a pawimawh hle a ni.

4. **RAM** : Random Access Memory tihna a ni a, RAM hi chi hnih a awm a, Static leh Dynamic RAM te an ni. Static RAM hi a chak zawkin a man pawh a to a, cache memory atan hman a ni thin. RAM hi computer a data lo vawngthatu a ni a, kan program khawih duh te rang taka kan access zung zung theihnan theihtawpin hna a lo thawk ve thin a ni. Chuvangin i RAM a len chuan i hnathawhtur lo dah lailawkna hmun a tam dawn tihna a ni a, i program hawn kha a chak phah leh zual dawn tihna a lo ni.



5. **Hard Disk Drive** : I hard disk hi i computer a data dahkhawlna hmun ber tur a ni a, RAM hian data lo vawng ve tho mahse an hnathawh a hrang daih a, RAM chuan temporary in kan program khawih azirin kan hna a chak theih nan data a lo vawng thin a, Hard Disk erawh hi chuan kan paihbo hma chu kan data duh kha kan computer-ah a dah tlat thung a ni. I computer a milemte, Game te, movies-te i dahna hi Hard disk chu a ni a, i hard disk a len poh leh thil i dah tam thei dawn tihna a ni.



6. **Others** : A dang hi chu a tello pawh a kan hman theih tawh an nih avangin sawi chipchiar vak tawh kherlo mai ang. En tel thuak thuak thung ila.

- a) **Graphic Card** : Graphic Card hian I computer display a tifiain I games khelh tur ah te khan nasa takin graphics a lo pui a, a milem lang a fiahfaiin a ang bik dawn a ni. Tunlai Games chhuak thar tha deuh ho ah chuan Graphic Card vuah hi a ngai kher thin. I graphic card azirin I game khelh theih a inanglovin a in fiah hleih viau thei bawk. Gamers leh Multimedia lam khawih mite tan chuan neih ngei ngei a tul a ni.



- b) **Sound Card** : Sound Card ve thung hi chuan a hming ang hian sound lam a pui a, sound card tha I hman chuan fiahfai leh ring tak pawn I ngaithla thei dawn a ni. Sound chip a chhiat pawhin sound card man tlawm te lei a thlak mai theih a ni.



- c) **TV Tuner** : I computer a TV chhuah theihna I duh ve a nih chuan TV Tuner hi vuah ve mai theih a ni bawk a, External leh Internal TV Tuner a awm a, External ah chuan CPU tel lovin Monitor kha I connect tawp thei a, Internal ah ve thung chuan I CPU a PCI Slot ah khan I vuah ve a ngai thung.



- d) **Optical Drive** : DVD emaw CD (Tunlaiah chuan Blu Ray te pawh a ni tawh ang chu) Writer emaw ROM emaw tal hi neih ngei ngei a tha, hemi hmang hian kan computer ah data kan lalut thin a, kan write chhuak thei bawk a ni.



e) **UPS** : Uninterruptible Power Sypply tihna a ni a, current su leh short lakah te, current hniam lutuk leh sak lutuk lakah te computer a vawng tha thin a, current a awm loh a, computer a thih tawp loh nan a veng bawk a ni. UPS tha (Battery nei tha) ah chuan rei tak current a awm loh pawhin a hman theih a ni.



f) **Printer** : Computer a milem leh kan thuchhut te hi amahin a lo chhuak ngawt thei lova, paper a print chhuah dawn chuan Printer a ngai thin a, tunlaiah chuan Multi Function Printer chi hrang hrang Xerox nghal thei te, computer a lem lakuhna (Scanner) nei tel nghal te a awm tawh a ni.



g) **Cabinet** : Cabinet emaw System Case ti a sawi thin a ni a, computer khawl zawng zawngin inbunkhawmna tur a ni a, cabinet I lei reng rengin I dahna hmun tur a zim chhe viau a nih loh chuan Cabinet lian lam hman a tha. Cabinet tha tak tak hman tur a awm a, Gamers leh Multimedia khawihte chuan Cooler Master hman theih chuan hman hram a tha khawp mai.



Part 2 : Assembling and disassembling hardware

Computer part hrang hrang chanchin tlangpui kan hre ta baw k a, computer thiah sawm leh remkhawm dan sawi tan leh dawn i la. A hmasa in kan thiahsawm hma a hriattur pawimawh em em chu computer part hi electronic device te tak te te, chhe awlsam tak an ni tih hriat ngei ngei tur a ni a. I taksa a static current awm pawh khan a tichhe thei a ni tih hrereng la, ESD Glove i nei theilo a nih pawhin i Cabinet chhin velah khan han zut kual la, i taksa a static current kha theih ang angin paih chhuah i tum hmasa phawt dawn nia. Chubakah a herhawanna tur Screw Driver i neih tel ngei a ngai baw k ang aw....

I thiahdarh dawn chuan :

1. Power socket atangin power lut zawng zawng phawi vek ang che.
2. I CPU a port hrang hrang a wire ho kha phawi vek ang che (Phawi kher loh pawhin a theih tho na in, a him bakah chetvel a ti nuam)
3. PCI Slot a Graphic card, TV Tuner, Sound card etc I vuah chuan a screw kha her thaw l la, uluk takin phawi ang che.
4. RAM slot atangin a hmawr tawp ve ve ah khan unlock na a awm ang an, khatah khan han kuai hlek la, a rawn chhuak ang a, uluk takin I la chhuak dawn nia. (Abikin RAM hi a sensitive avangin I dim dawn nia)
5. HDD leh Optical Drive connector ho kha phawi la, screw kha herh thaw l la, dim deuhin la chhuak ang che.
6. Processor fan kha herh thaw l na tur a awm ang a, han herh thaw l zeuh la, awlsam takin a lakchhuah mai theih ang. I lak chhuah hma in Power supply cable kha phawi hmasak theihnghilh loh tur aw...
7. Processor slot sirah khan a lock na a awm ang a, I kuai zeuh ang a, I hawn hnuah dim takin a processor kha I la chhuak dawn nia.
8. SMPS atanga Power Cable lo chhuak kha han en vang vang la, HDD leh optical Drive a lut chu I phawi tawh a, Processor fan I phawi tawh baw k a, Motherboard ah khan a lian ber a la invuah ang a, kha kha a laiah khan han en la, a lock a awm ang a, han hmet deuh la, I phawi chhuak dawn nia.
9. SMPS kha a kilhna I herhthawl ang a, I la chhuak thei tawh ang.
10. Motherboard chiah a chuang tawh a, a kilhna kha han herh thaw l la. Awlsam takin I la chhuak thei tawh ang.

A remkhawm lampang ve thung aw...

1. Cabinet lawngin a la awm a, khatah khan i motherboard kha han dah la, a I/O port te kha a inhne rem em tihte kha uluk takin en la, I duh ang tawh a a inrem hnuah nghet takin i kilh dawn nia. (Thenkhat chuan Processor leh RAM te an vuahsa nghal thin a, mahse vuahsa loh hian a awlsam mahin ka hria. Chuan, Motherboard tharah chuan I/O Port seal te a awm ang a, kha kha thlawn la, Processor slot ah khan a chhin a awm ang a, kha kha lakchhuah bawh tur a ni).



2. Processor kan vuah ve dawn tawh ang a, hei hi fimkhur ngai tawpkhawk a ni. I processor slot a a chhin kha I pa chhuak tawh ang a, I processor kha han en vang vang la, cut sign a lo awm ang, motherboard ah pawh khan han en la, a sign I hmu mai ang. Kha mi a in cut lai te kha inbawhthuah chiahin a inhnerem thei dawn em uluk takin en ang che. I tihsual chuan I tichhe daih thei a ni tih I hre ran dawn nia. I chian tawh hnuah han vuah lut la, a sir a a lock-na (lever kawih mai tur kha) khan nghet takin i kilh hnan leh thlap dawn nia.



3. A dawh lehah chuan I processor fan kha i vuah leh dawn a, I fan azirin a vuah dan hi a inang lo nual a, a tlangpuiin I fan khan ke han herh vir a, lo lian thei a nei ang a, chu chu motherboard a a invihluh chiah khan i herh dawn a ni. A kilhna leh a kua kha en mil la, a inrem thlap chuan i vuah ang a, a kilhna kha herhna tur zawng a inziak ang a, I herh kual dan dan dawn nia. Chuan A power cable kha a vir hun a a



sut buai theih loh turin la la, a vihluhna luh a lo awm ang a, chutah chuan i vit dawn nia.

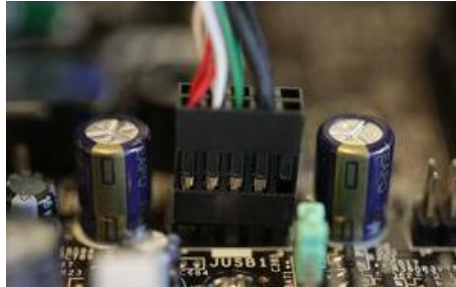
4. I vuah zawh hnuah I RAM kha han la chhuak la, a lai velah khan a khuar lai bik Cut sign a lo awm ve leh ang a, khami leh i motherboard a a pawng lai in kilh rem tur chiah khan vuah la, a sir leh lam kha han nawr lut la, a ri khep ang a, leh lam kha i nawr lut leh dawn nia. A lock kha a lo ri leh khep ang.
5. Chumi zawhah chuan i Hard Disk leh optical drive ho kha a drive bays ah khan han vuah lut la, i kilh nghetnghal dawn nia. Optical Drive bik hi a pawn lam atanga nawr luh a ngai thung ang.
6. Graphic Card emaw PCI Card chi dang vuah tur I neih chuan PCI Slot ah khan vuah mai tur a ni a, i vuah hmain i CPU hnung lama a lawr chhuahna (A port vihluhna tur) kha kheuh tlak phawt angai ang.
7. Chumi zawhah I SMPS kha a chunglamah khan a vuahna tur a lo awm ang a, chhung deuh a tangin I nawr let pheih ang a, a inhnekrem thlap hunah i kilh dawn nia. A tlangpuiin a wire bawr kha hnuailamah a lawr thin.

- (a) Power Supply kan pe thei ta a, SMPS atanga lo chhuak a lian ber 24 Pin Power cord kha Motherboard a lut tur a ni a, i motherboard kha han en la, a invuah na lai tur awm chu i hmu thei mai ang. Khatah khan nghet thlapin I vuah lut dawn nia.



- (b) 4 Pin lo awm ve neuh neuh i hmu bawk ang a, khang ho kha Hard Disk leh Optical Drive vel a power pechhuaktu tur an ni ve leh thung a, khang pin ho kha a hmingah Molex an ti a, 5Volt theuh an pai ve a ni. I vuahin a eng lam kha pawn

lamah dah tur a ni. Tunlai chhuak ho chu SATA a ni deuh vek tawh a, vuah sual theih a ni chiahlo. I HDD/Optical drive mawng kha han enchiang la, a invuahna tur chu I hmu thei mai ang.



(c) Front Panel Audio, USB, and FireWire Connectors vuahna tur a hnuailamah khan a awm ang a, khatah khan a hmalam a USB leh audio vel kha hman theih a a awm theihnan i cabinet in a ken tel connect tur a

awm ang a, motherboard ah khan USB1 , USB2 tih velin a lo inziak ang a, khatah khan I vuah dawn nia.

- (d) Power Switch, LED leh Restart switch vuah a la ngai dawn a, kha kha uluk takin i motherboard guide book ah emaw i motherboard ah emaw khan han en la, a vuah dan tur a lo lang diat diat ang. Power Sw, Reset Sw, HDD Led tih velin a lo inziak ang a, i cabinet a a switch hmawr lehlam lo lawr kha han en la, a inmil turin i vuah dawn nia.



Part 3 : Installing Windows

Windows Install dawn hian I install tur kha Windows XP emaw Windows 7 emaw Windows Vista emaw pawh nise, a disk I neih a ngai a, I boot disk chu I DVD/CD drive ah khan thun la, I computer kha restart ang che. I BIOS setting ah khan 1st Boot Device ah DVD/CD a inthlan sa chuan a hnuai a mi ang hian a lo lang ang.

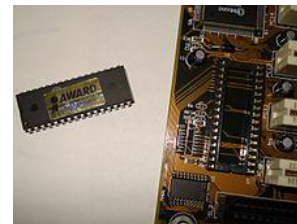


A chungale khi a lo langlo a, windows ah a lut tlang emaw a kal theihloh tlat emaw chuan i bios setting kha thlak a ngai tihna a ni a, bios setting i thlak thiamloh chuan i motherboard a zirin 1st Boot Device thlanna tur key hmeh tur bik a awm ang.

A tlangpuiin F8, F10, F11, F12 emaw F2 a ni tlangpui a, I computer i restart ang a, a engemaw ber khi hmet nawn char char la (hmet reng lovin ihmet zawt zawt dawn nia). First Boot Device thlanna tur a lo lang ang a, DVD/CD kha I thlang dawn nia.

I tihtheih ngang loh chuan BIOS setting I thlak a ngai dawn a, Intel Board hmang tan heti hian i ti dawn nia.

BIOS a luh dan : Bios a luhdan hi I motherboard hman



azirin a inanglo thei viau a, Delete key hman lar ber a nih avangin Delete key angin kan sawi mai ang a, I computer ah kha chuan a ni ve kherlo thei. A lo ni lo a nih chuan a en dan chu I computer I on chiah khan a hnuaia mi ang deuh hian a lo lang ang a.

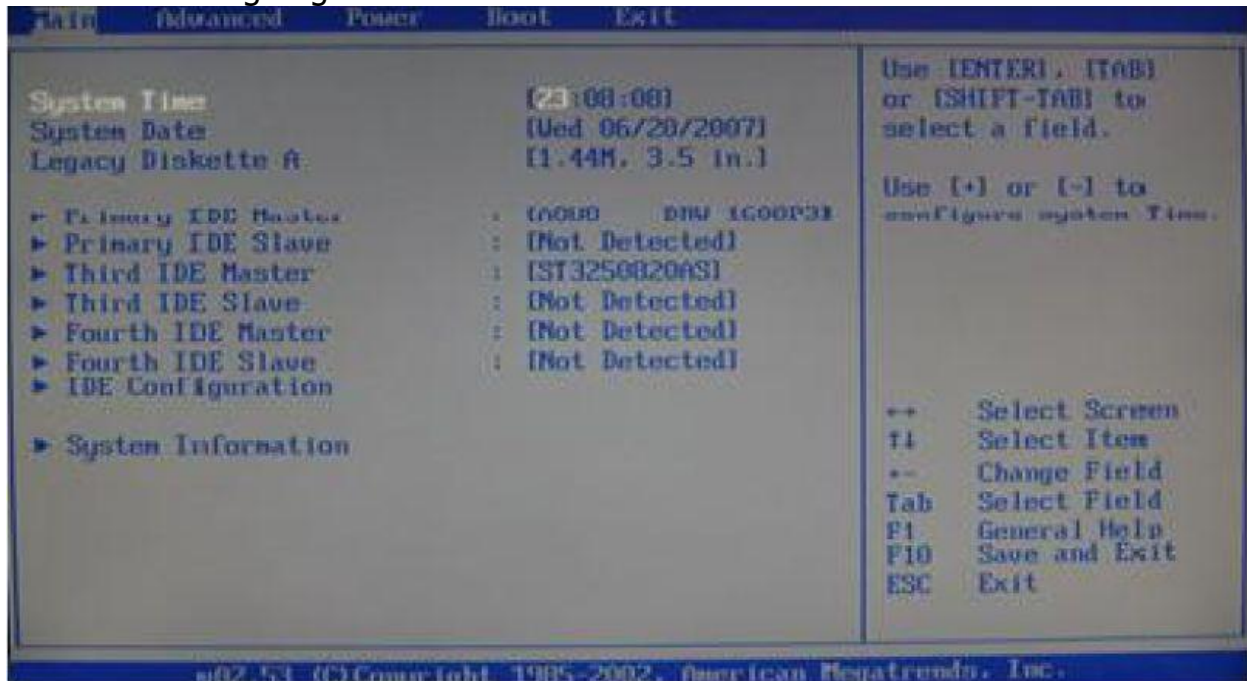


A chung a lemah khian BIOS Setup tih kan hmu a, khitiang deuh khian I computer a hman tur pawh kha a lo inziak ang a, chu chu I hmet vet hung dawn nia.

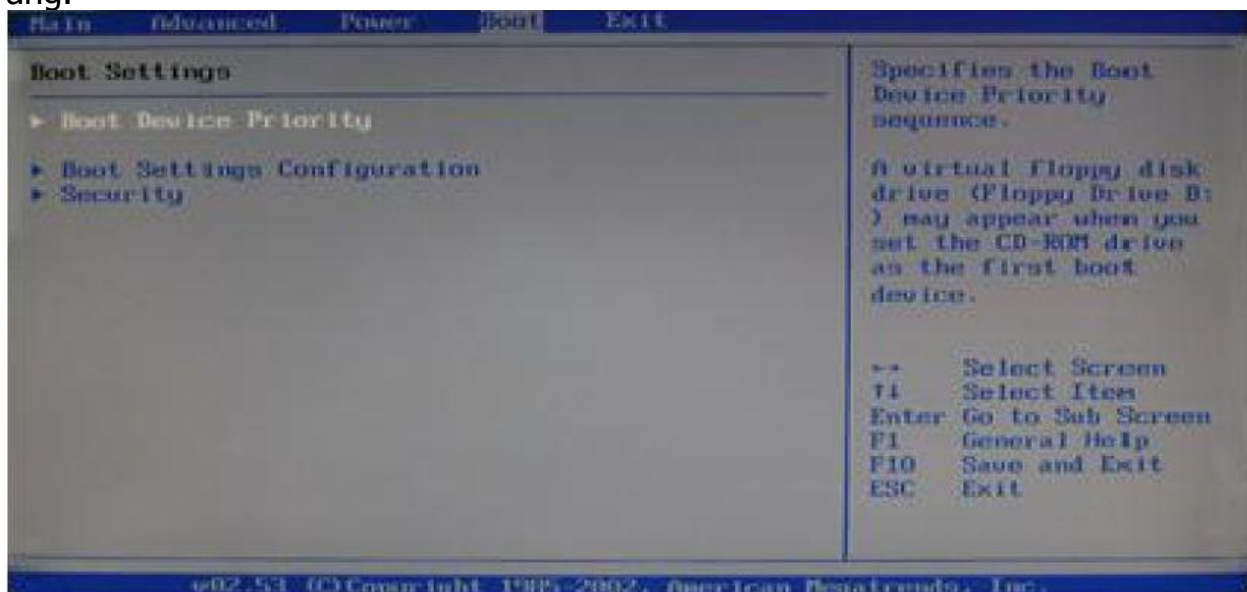
BIOS hi Basic Input Output System tihna a ni a, I motherboard ah khan a chi an bilh tel nghal thin a, computer I han on chiah khan Power on Self Test an ti mai a, I computer a hardware component keyboard, mouse, RAM, HDD etc te kha a rawn check a, boot loader khan I component device Hard disk emaw DVD/CD hnenah boot turin a tir ta thin a ni. BIOS a memory hi Read only Memory (ROM) tih a ni kher a, computer kan off pawhin a bo ve thei lo a, chuvangin Non-Volatile an ti kher a ni.

BIOS hi kan computer a zirin a inanglo thei hle a, amaherawh chu a tlangpuiin AMIBIOS hmang ho landan ang hian han sawifiah dawn ila.

Computer kha Restart la, Delete key kha lo hmet char char la, a hnuaia mi ang hian a rawn lang ang.



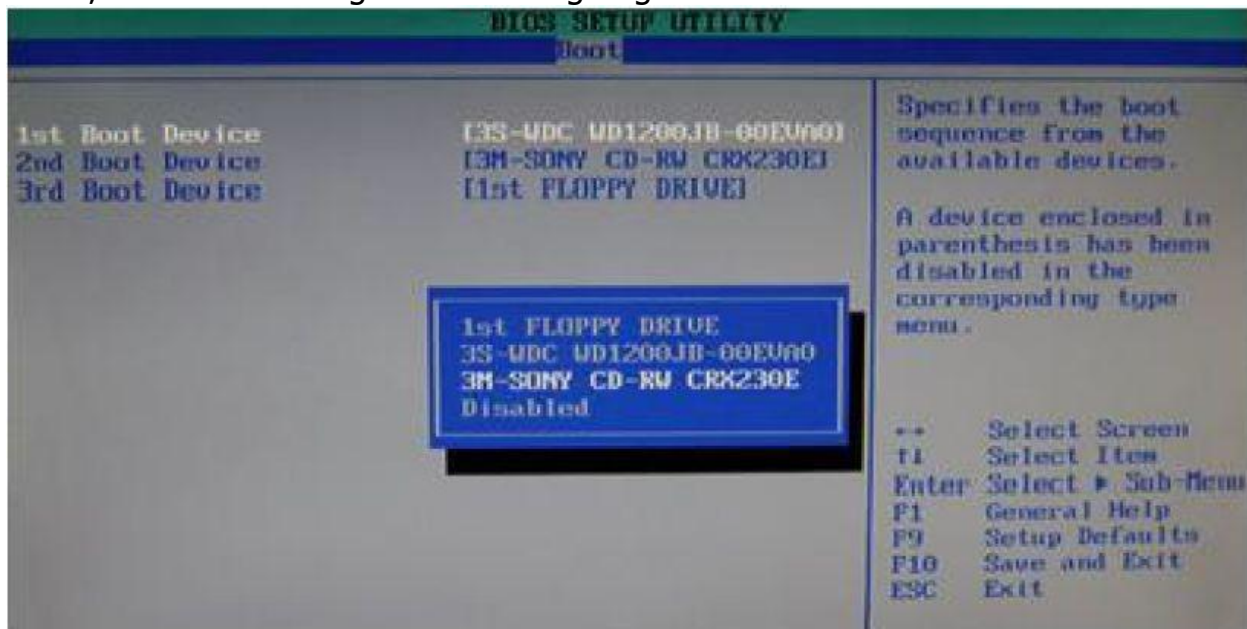
Khitiang a a rawn lan hnua khian **BOOT** tih ah khian kal tur a ni a, keyboard dinglam a fei pa 4 , chunglam , hnua lam , veilam, dinglam kawh hmang khan I ti che kual vel thei a, dinglam kawh (Right Arrow) hmang khan vawi thum I hmeh chuan Boot tih a thleng chiah ang a, a hnuaia mi ang hian a rawn lang ang.



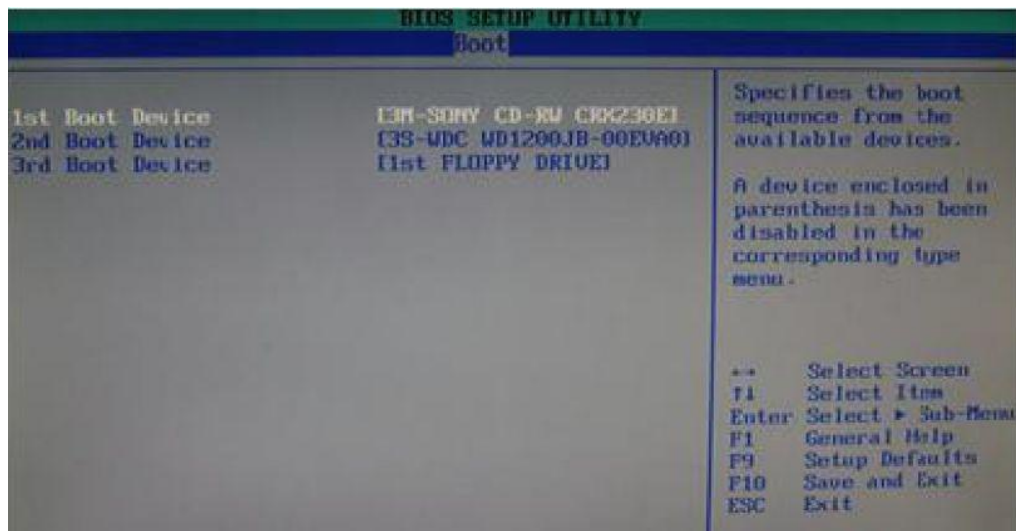
BOOT Device Priority tih kha a var bik ta a, Enter key hmeh leh la, a hnuai mi ang hian a lo lang leh ang.



A chung a mi ang hian **1st Boot Device , 2nd Boot Device leh 3rd Boot Device** tiin a rawn lang ang. **1st Boot Device** khi a var bik leh ta a, Enter hmet leh la, a hnuai a mi ang hian a lo lang ang.



A lem lang khi I hardware device hman azirin a inang kherlo mai thei a, mahse kan duhber chu 1st Boot Device a DVD/CD dah kha a ni a, I keyboard a fei hmang khan I kalsawn tir leh thei a, a chhuk leh chho zawng khan han tawlh saw vel la, I DVD/CD zawnah khan dah la, I enter leh dawn nia.



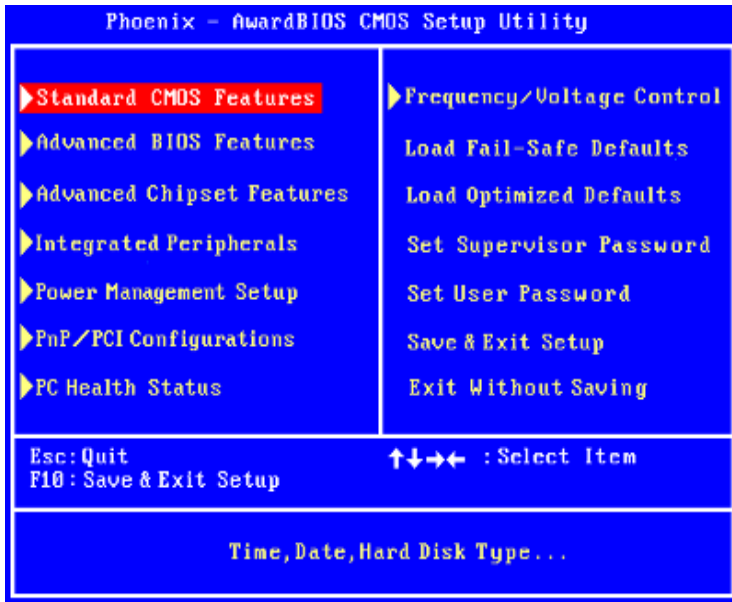
A chung a mi ang hian 1st Boot Device tih zawnah DVD/CD chu a lo lang vang tawh ang a, I mission I zo fel trep e. F10 key kha han hmet leh zeuh la, a hnuaia mi ang hian a lo lang ang.



OK tih zawn khi a dum bik ta kalh mai a, Enter hmet leh la, I DVD/CD kha boot hmasa ber turin I dah fel la. I boot disk kha DVD/CD Drive ah thun la, computer kha restart ang che. A sir a mi ang hian a lo lang tawh ang.

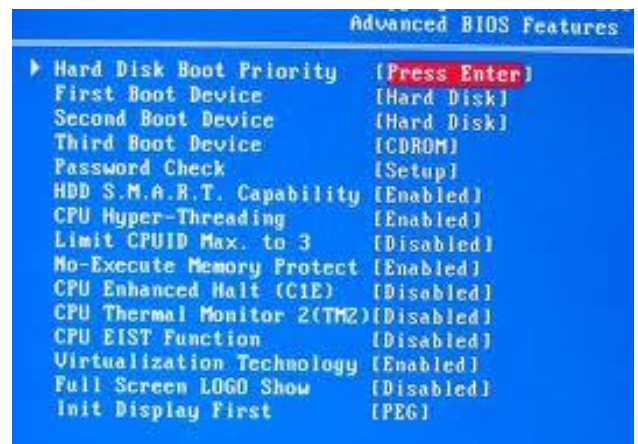


AmiBios hmang tan kan sawi zo chiah a, **Award Bios** hmang tan sawi ve leh lawk ang.



I computer i restart a , Delete key i lo hmeh char char khan a hnuaia mi ang hian a rawn lang ang.

Hetah chuan thlenna chin a sen ve thung. Advanced BIOS Features ah hian kan kal ve dawn thung a, keyboard a fei lem (Arrow keys) hmang khan a chhuk zawng a kan kal dawn avangin a hnuaia lam kha vawi khat kan hmet zeuh ang a, kan enter ang a, a hnuaia mi ang hian a lo lang ang.



A engemaw zawk zawk ang khian a lo lang ang a, First Boot Device hi kan thlak tur a nih avangin fei hmang bawk khan kan chhuk leh ang a, a hnuaia mi ang hian a lo lang ang.

DVD/CD kan thlang ang a, Enter key kan hmet leh ang a, a hnuaia mi ang hian a lo lang veleh ang. Second Boot Device ah hian a ngai ang chiah khan kan kal ang a, HDD kan dah ve thung ang.



A chung a mi ang khian a lo lang tawh ang a, F10 kan hmet ve leh ang a, a hnuaia mi ang hian a lo lang ve leh ang.



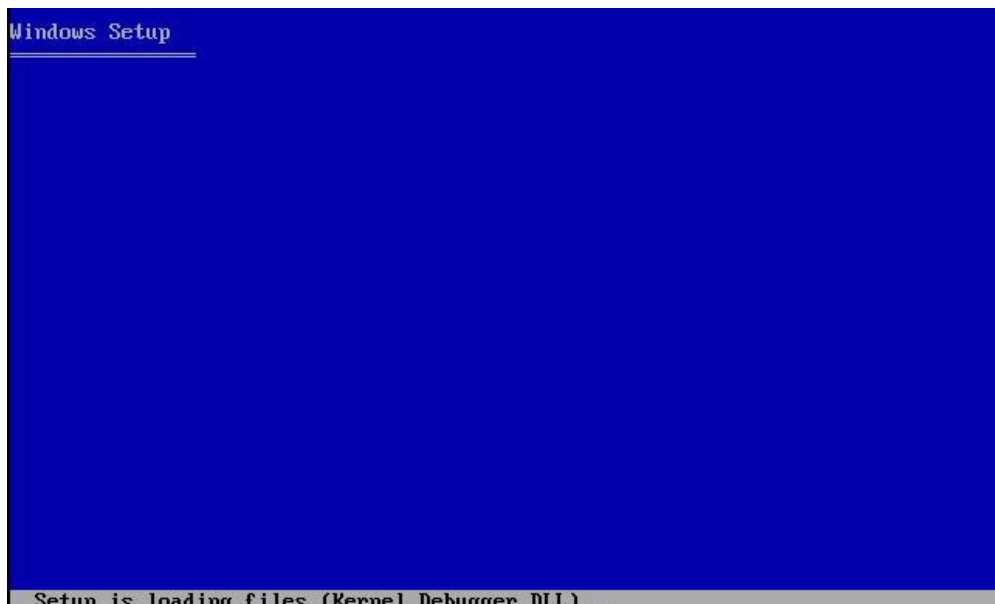
A vei lama mi ang hian a lo lang ang a, Kan save dawn avangin Y kan hmet ang a, kan zo fel a ni mai. Computer a DVD/CD drive ah boot disk kan thun ang a, kan restart ang a windows load chu kan tan thei tawh ang.

WINDOWS XP LOAD DAN

BIOS set dan kan sawi tawh bawk a, boot disk kan thun hnu khan a hnuaia mi ang hian a lo lang ang a.



Press any key tih a lo lang a, I duh duh I hmet thei ang, chuan a hnuaia mi ang hian a lo lang ve leh ang.



Windows XP Professional Setup

Welcome to Setup.

This portion of the Setup program prepares Microsoft(R) Windows(R) XP to run on your computer.

- To set up Windows XP now, press ENTER.
- To repair a Windows XP installation using Recovery Console, press R.
- To quit Setup without installing Windows XP, press F3.

ENTER=Continue R=Repair F3=Quit

A chung a a rawn lan khian **ENTER** hmeh tur a ni. Chuan hetiang hian a rawn lang leh ang.

Windows XP Licensing Agreement

Microsoft Windows XP Professional

END-USER LICENSE AGREEMENT

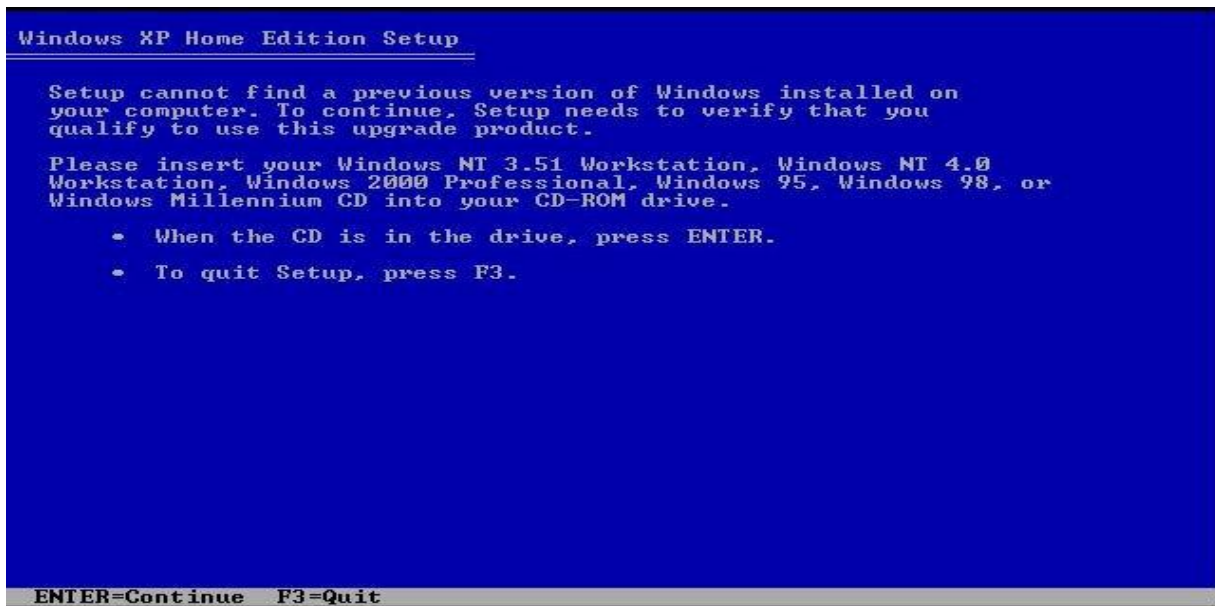
IMPORTANT-READ CAREFULLY: This End-User License Agreement ("EULA") is a legal agreement between you (either an individual or a single entity) and Microsoft Corporation for the Microsoft software product identified above, which includes computer software and may include associated media, printed materials, "online" or electronic documentation, and Internet-based services ("Product"). An amendment or addendum to this EULA may accompany the Product. YOU AGREE TO BE BOUND BY THE TERMS OF THIS EULA BY INSTALLING, COPYING, OR OTHERWISE USING THE PRODUCT. IF YOU DO NOT AGREE, DO NOT INSTALL OR USE THE PRODUCT; YOU MAY RETURN IT TO YOUR PLACE OF PURCHASE FOR A FULL REFUND.

1. **GRANT OF LICENSE.** Microsoft grants you the following rights provided that you comply with all terms and conditions of this EULA:

- * Installation and use. You may install, use, access, display and run one copy of the Product on a single computer, such as a workstation, terminal or other device ("Workstation Computer"). The Product may not be used by more than two (2) processors at any one time on any

F8=I agree ESC=I do not agree PAGE DOWN=Next Page

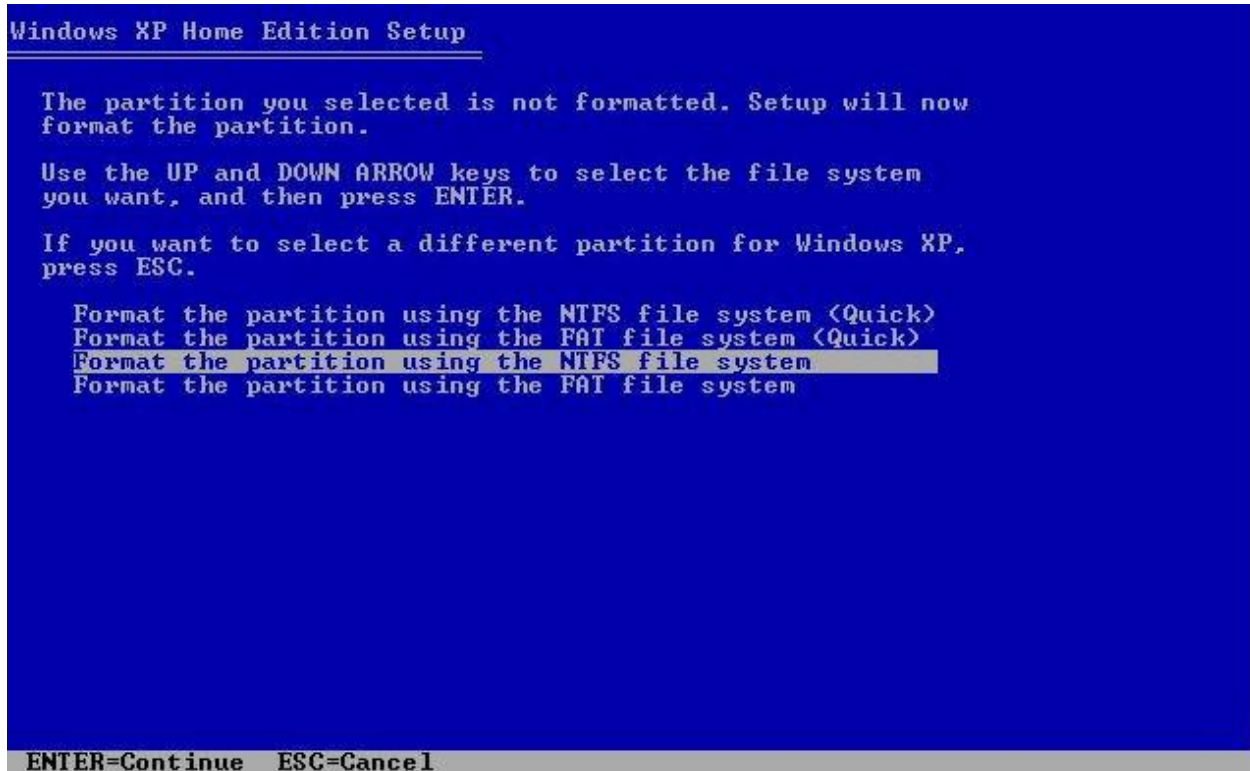
License Agreement a lo lang ang a, **F8** kha hmet leh la. A hnuaia mi ang hian a rawn lang ang.



A chung a mi ang a rawn lan hunah **Enter** leh tur a ni. Tichuan hetiang hian a rawn lang leh ang.

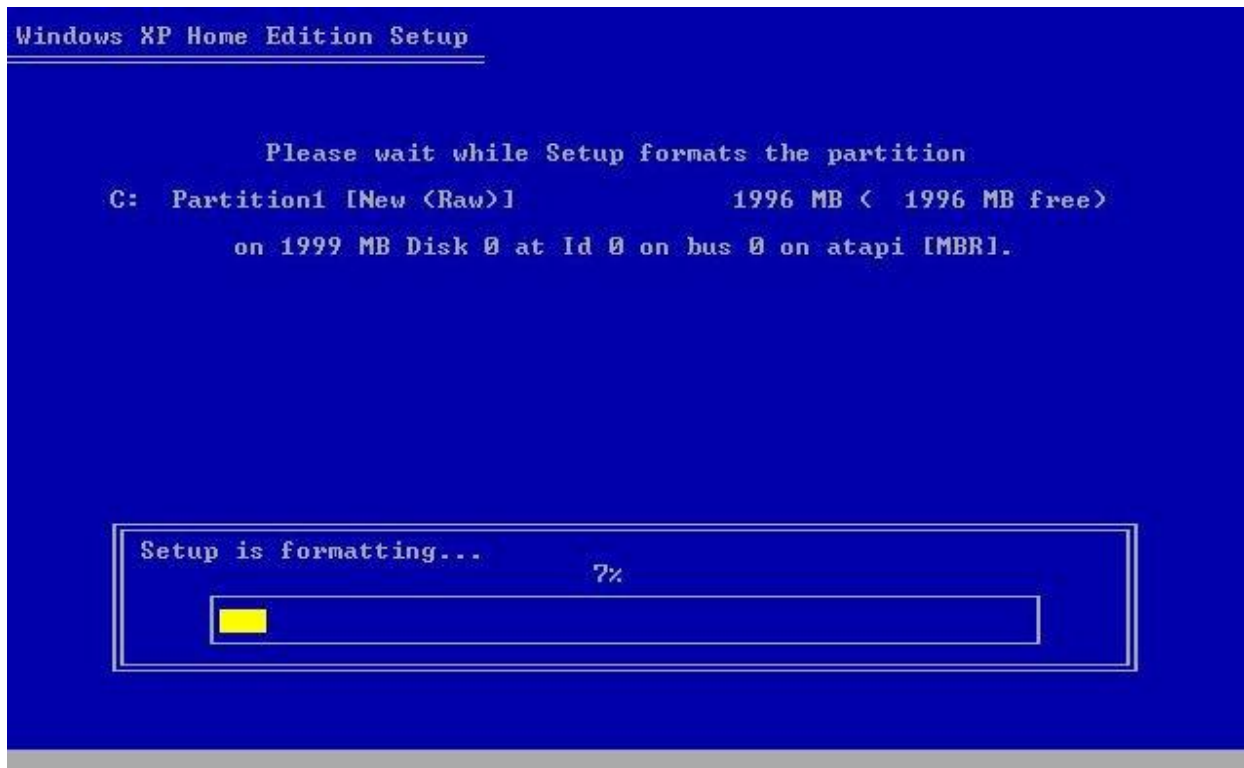


C Drive hi a tlangpuiin Windows Load na drive atan kan hman thin anih avangin C: hi kan thlang ang a, I duh chuan a dang pawh I thlang thei tho. Amaherawhchu partition danga I thil dah kha a bo loh nan I windows load na sa kha I thlang dawn nia. C Drive hi hman tlanglawn ber a ni. A lema kan hmuh ang hian C a kan load dawn chuan C kan thlang ang a, kan enter ang. Chumi zawhah a hnuaia mi ang hian a lo lang leh ang.

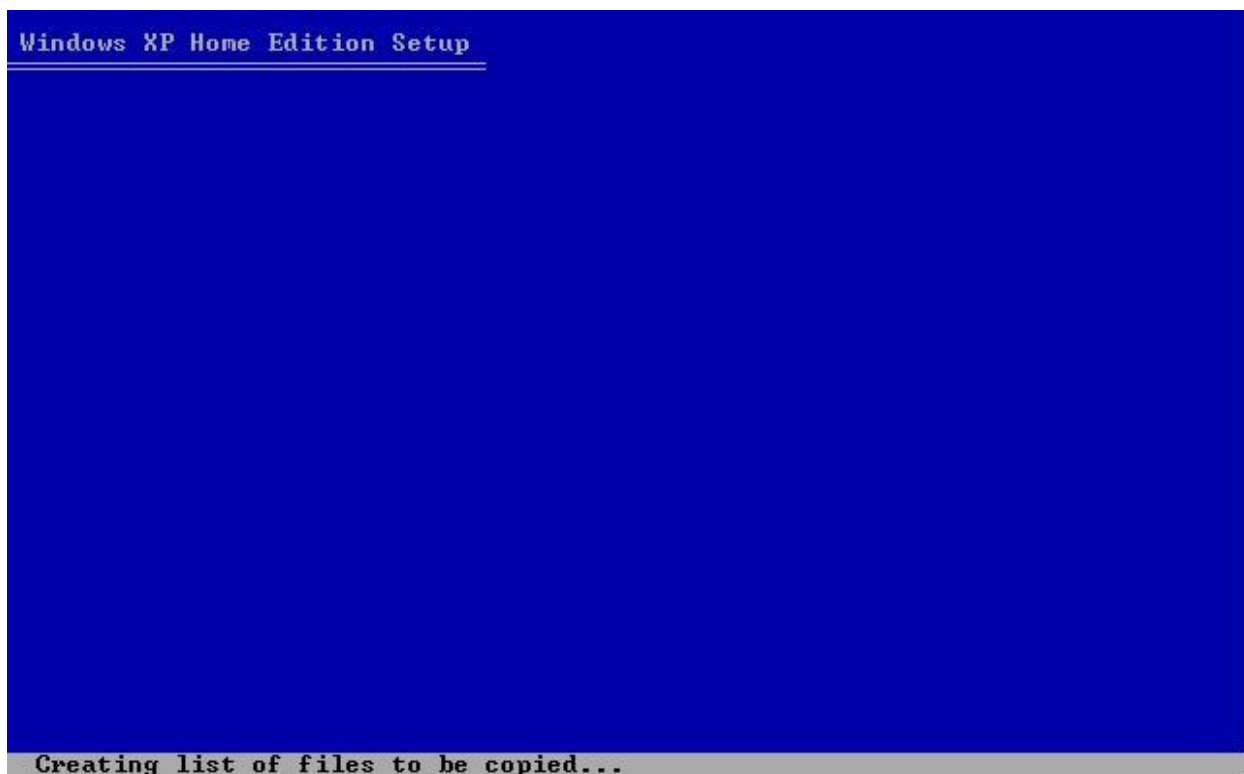


Kan Windows load na tur drive kha kan format dawn a, kan format tawh chuan a chhunga awm zawng zawng kha a bo vek dawn a, a ruak vekin a thar ang hlakin a chhuah leh dawn a ni. Kan duhdan thlan tur a lo lang a, NTFS chu NT File System tihna a ni a, file system thar zawk a niin, file lian deuh pawh a save theih bakah security ah pawh tha zawk a ngaih a ni a, FAT ve thung hi File Allocation Table tihna a ni a, file 4GB aia lian a save theilo.

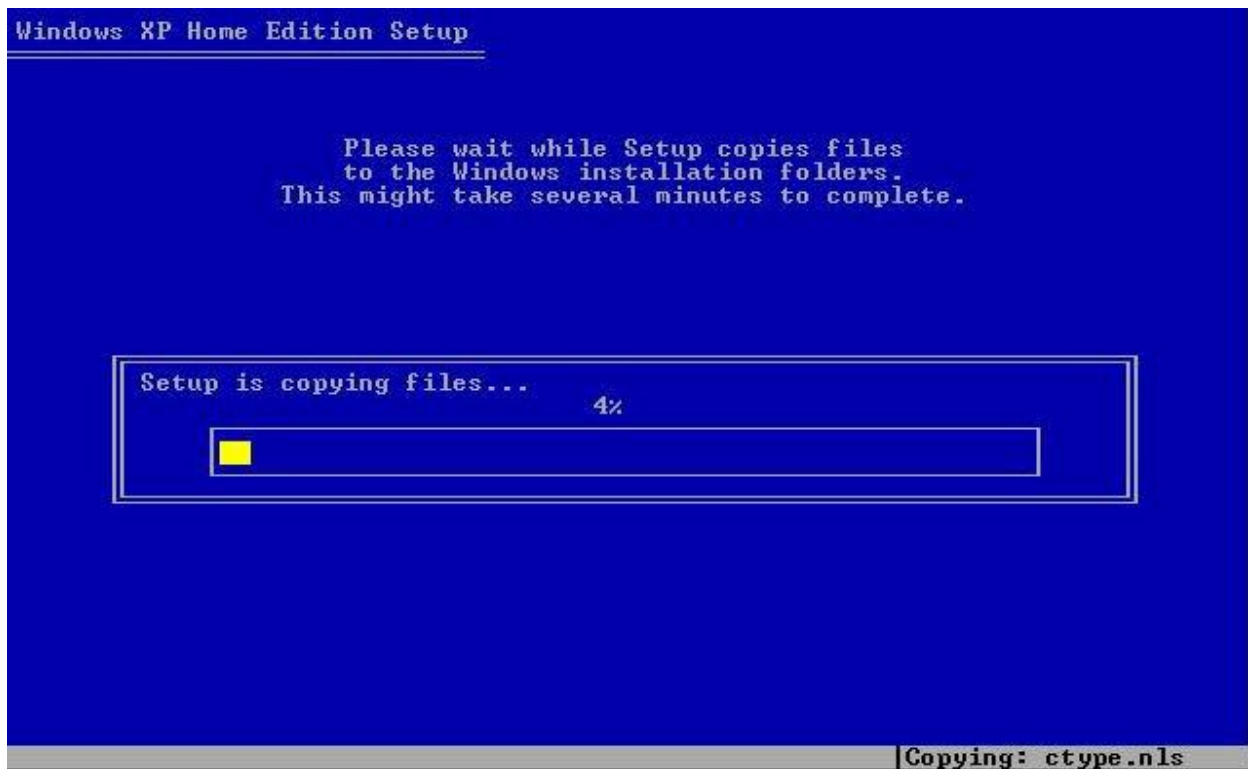
Bracket chhunga Quick tih awm khi kan thlan chuan a format chhung a rang a, reiloteah a format zo zung zung bik a, amaherawhchu HDD in a tuar deuh thung. Mahni khawl duatlai kan format chuan Quick hi hmanloh tha ka ti. (Keima mimal ngaihdan mai mai)



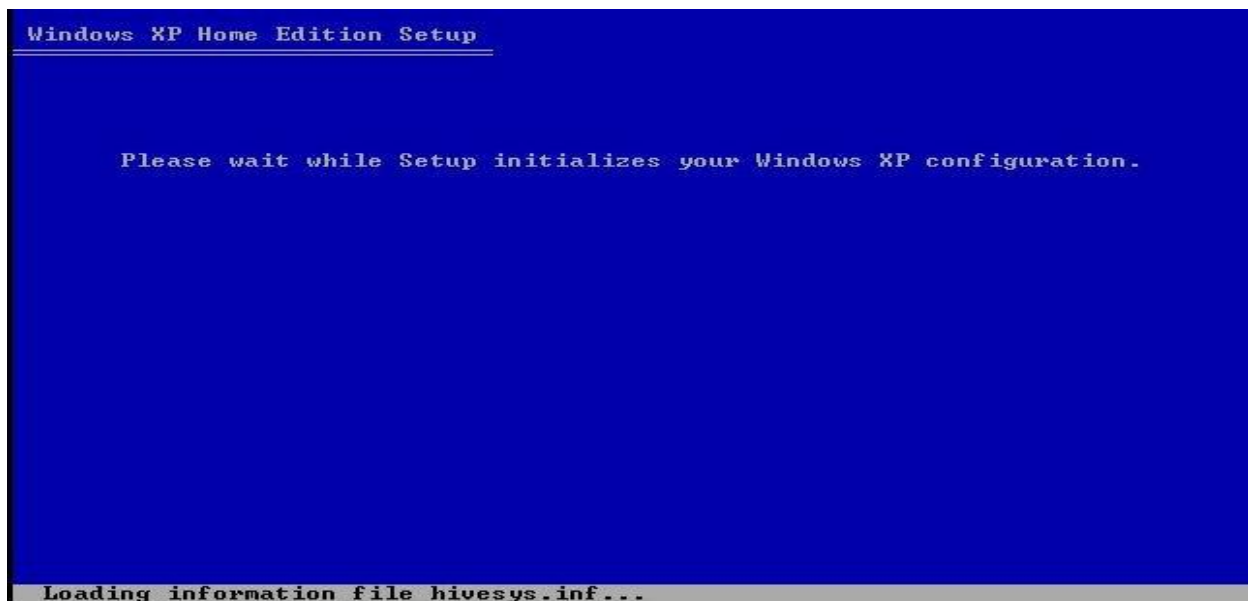
Kan duh kan select ta a, a chung a mi ang hian C Drve chu a format ang a, a zawh hnuah a hnuai a mi ang hian a lo lang ang.



Files a copy luh tur a siam fel ang a, a hnuaia mi ang hian a lo lang veleh ang.



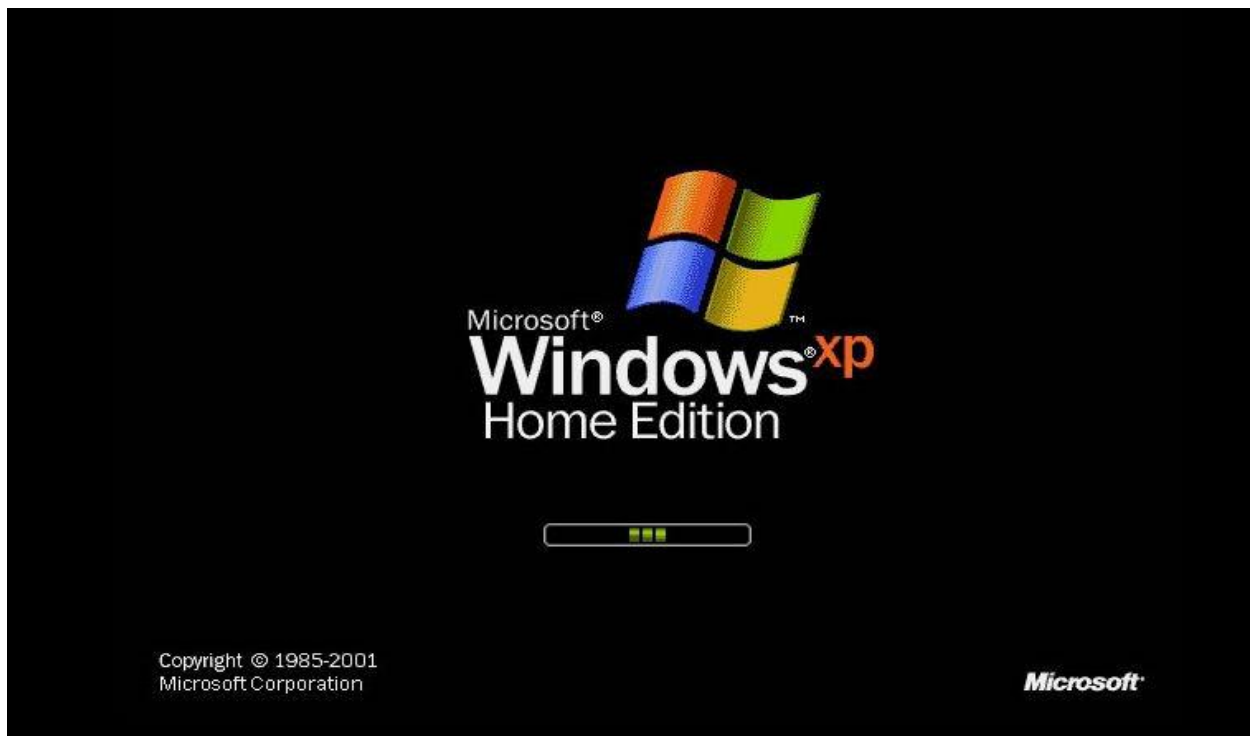
File pawimawh I mamawh turte a copy lut char char ang a, a zawh veleh a hnuaia mi ang hian a lo lang ang a.

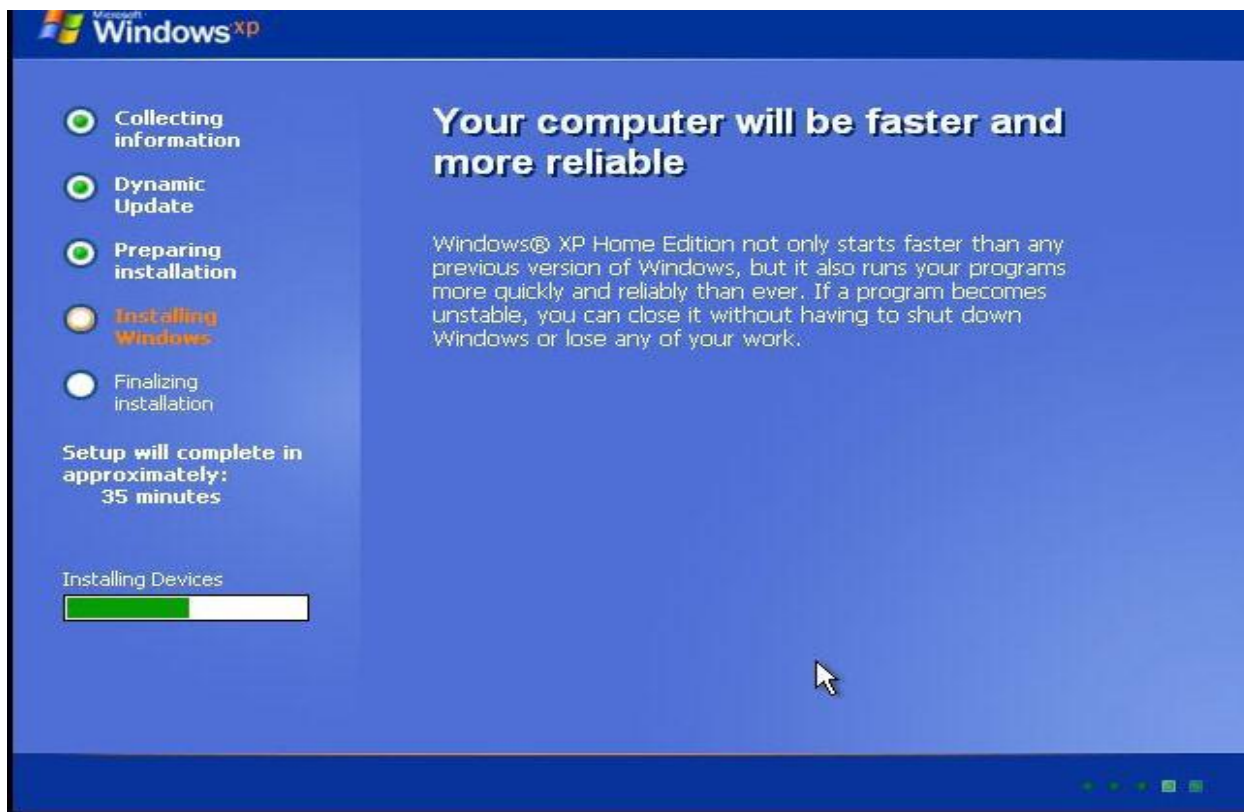
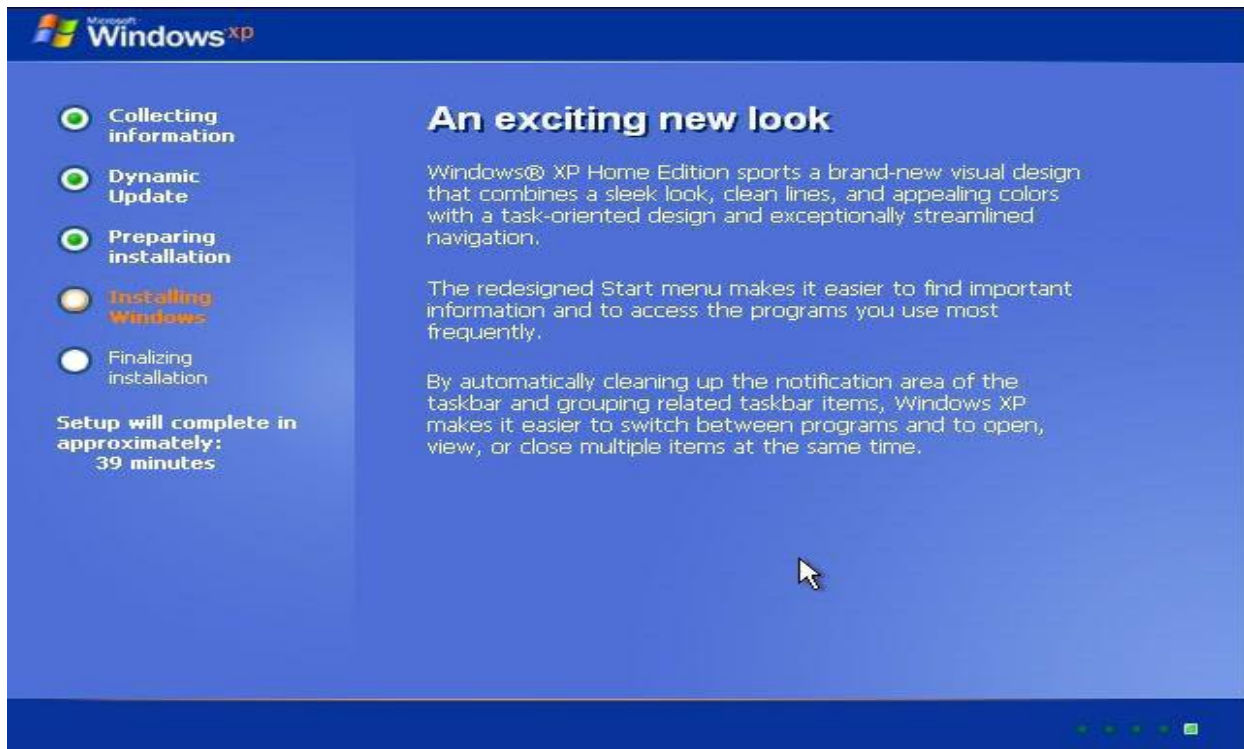


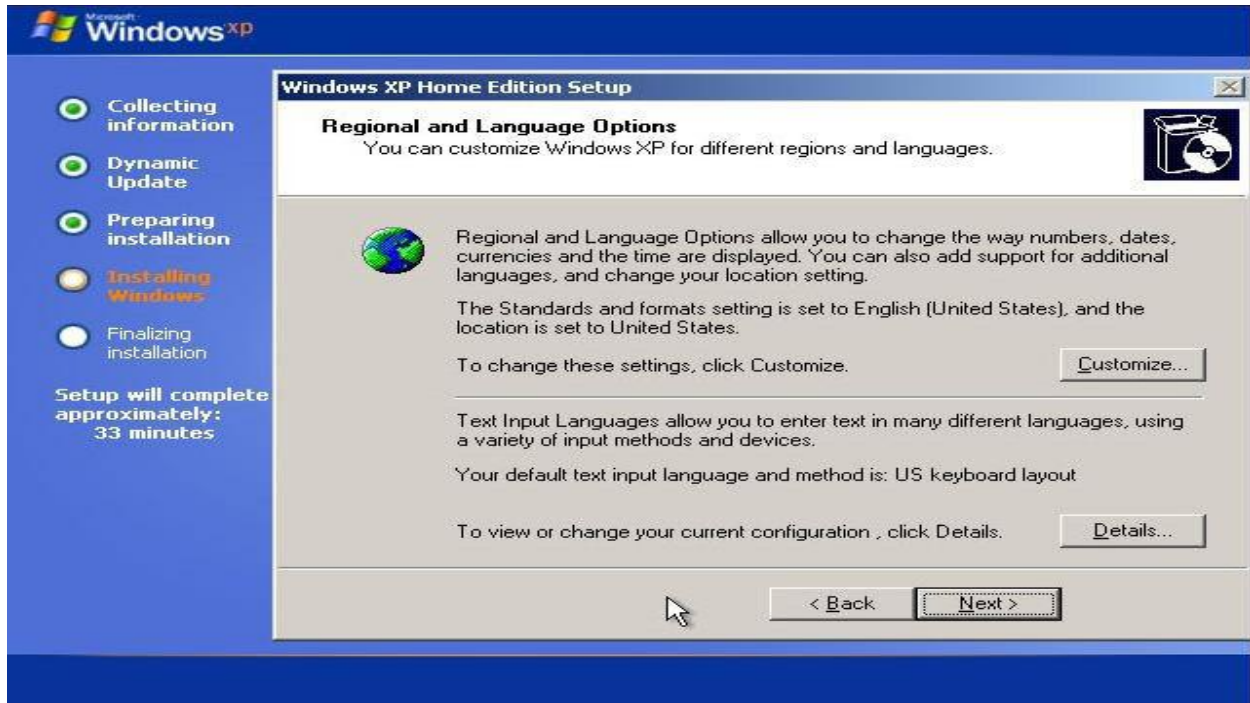
A zawhah a hnuaia mi ang hian a lo lang ang a, I nghah peihloh leh Enter I hmet ang.



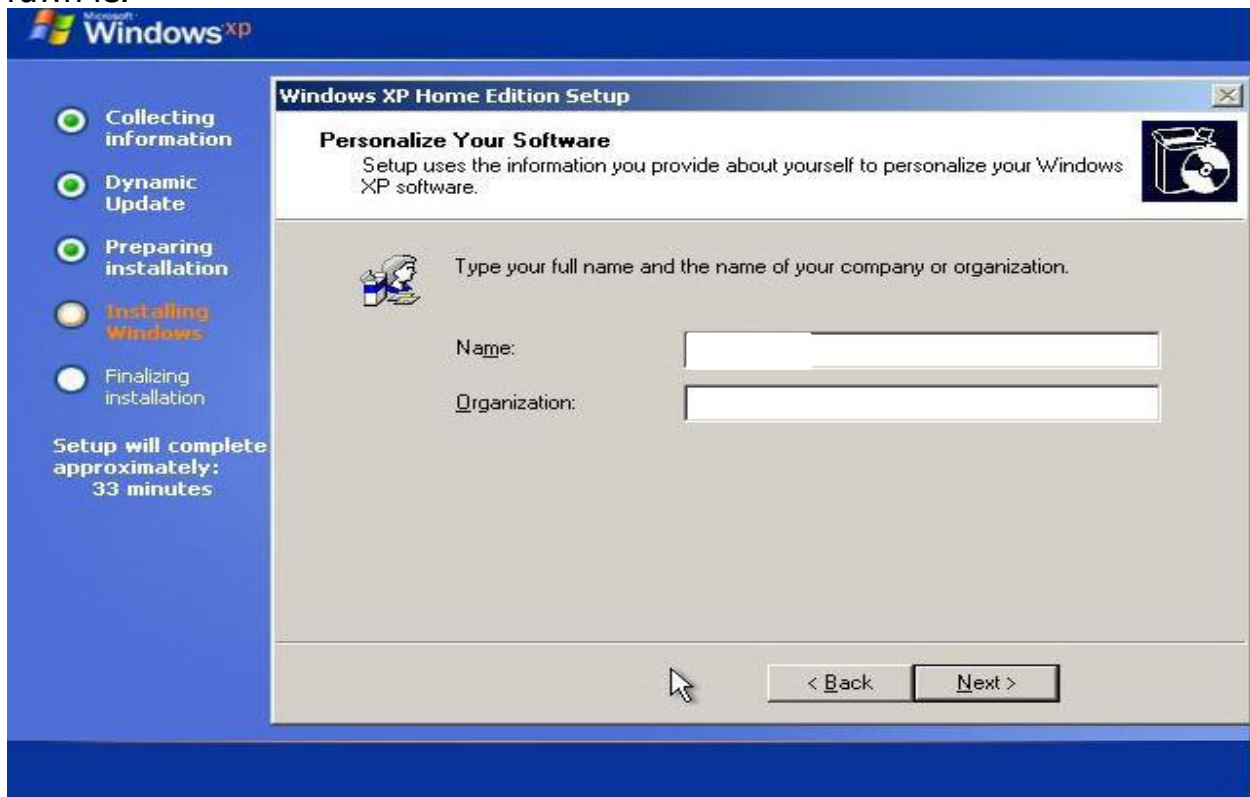
Computer a rawn in restart ang a, press any key a rawn tih khan engmah hmeh tawhloh tur a ni. Tichuan a hnuaia mi ang hian a lo lang ang.



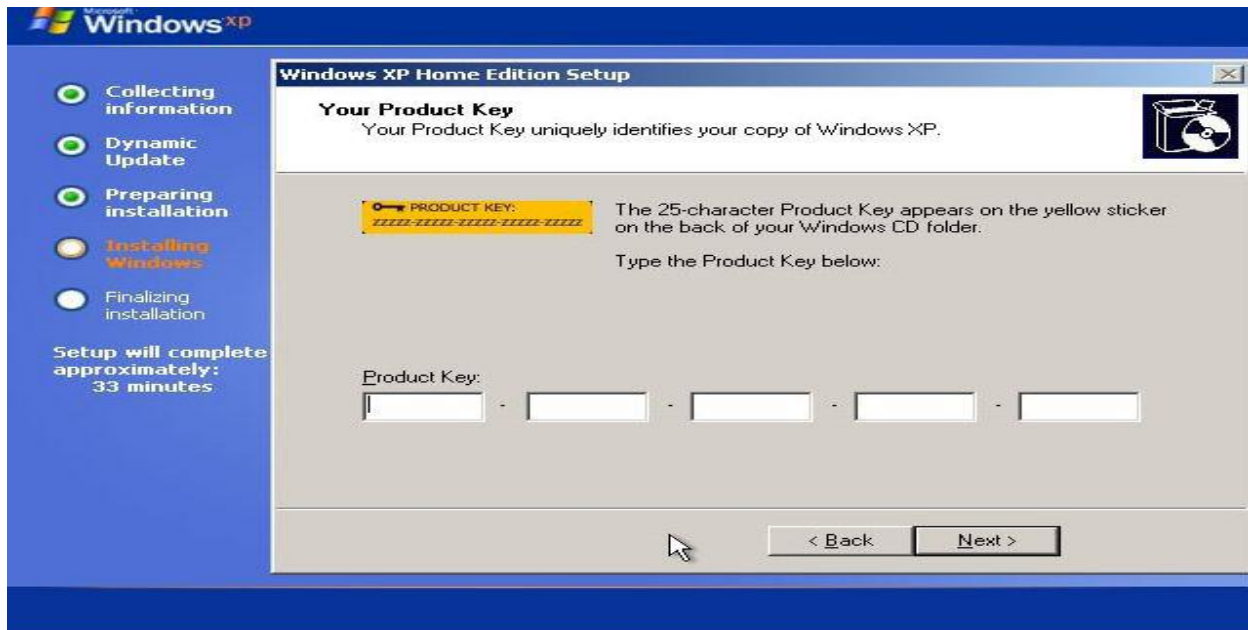




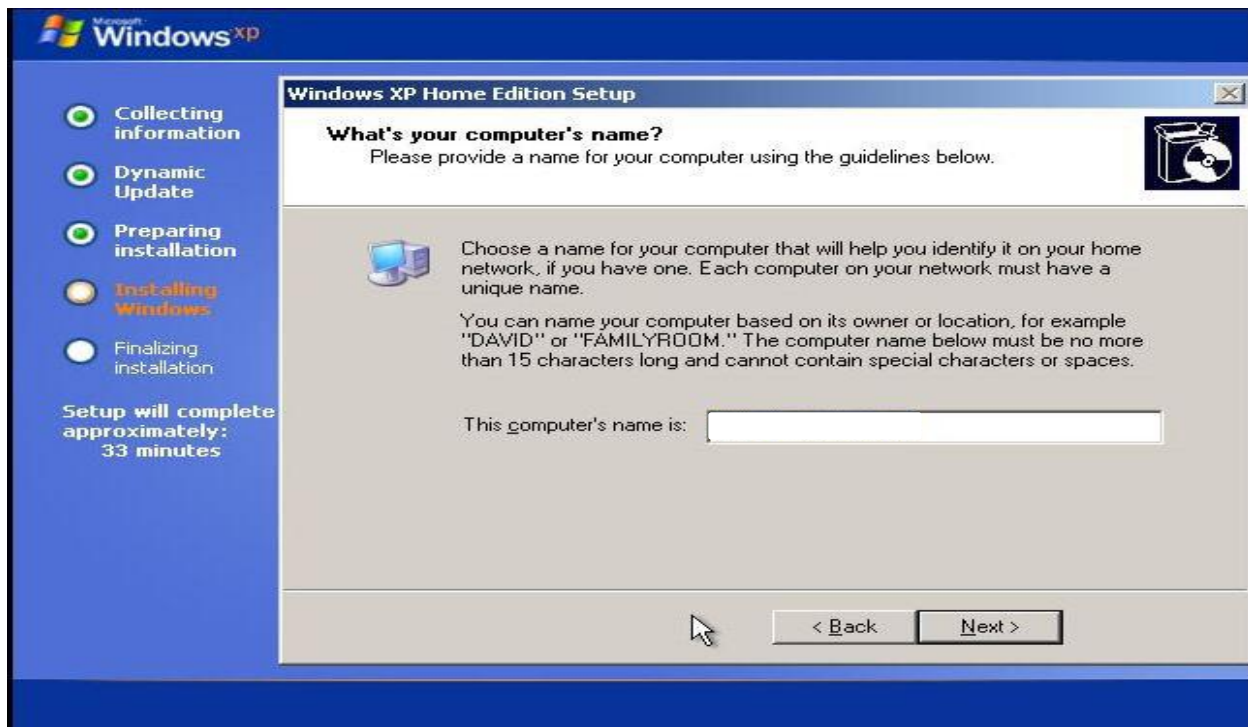
A chung a mi ang khi a lo lan chuan Next tih a kaw k sa a, Enter leh tawp mai rawh le.



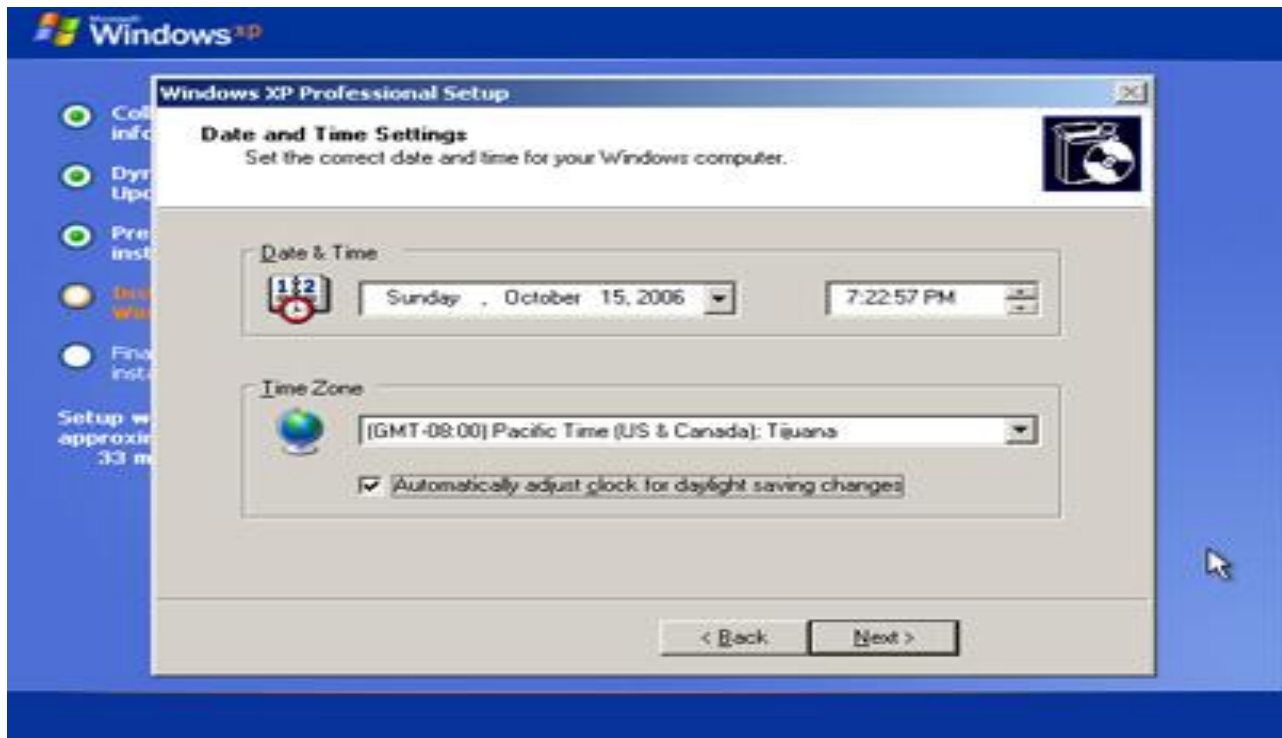
Khti khian a lo lan chuan Name zawnah khian I hming I chhu ang a, Organization ah khian I duh duh I chhu le hang a, I enter leh dawn nia.



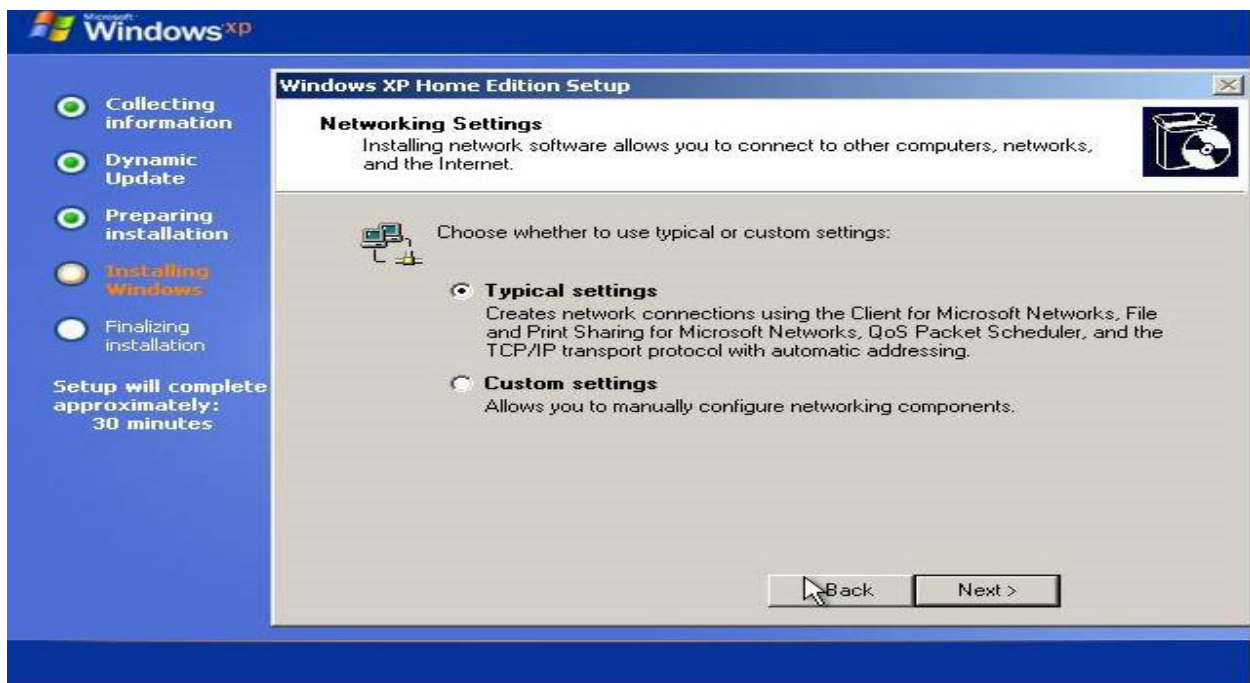
Product key chhutna tur a lo lang ang a, I windows XP product key kha I chhu lut dawn nia. I neih loh chuan '**V2C47-MK7JD-3R89F-D2KXW-VPK3J**' hi I hmang ve mai dawn nia.



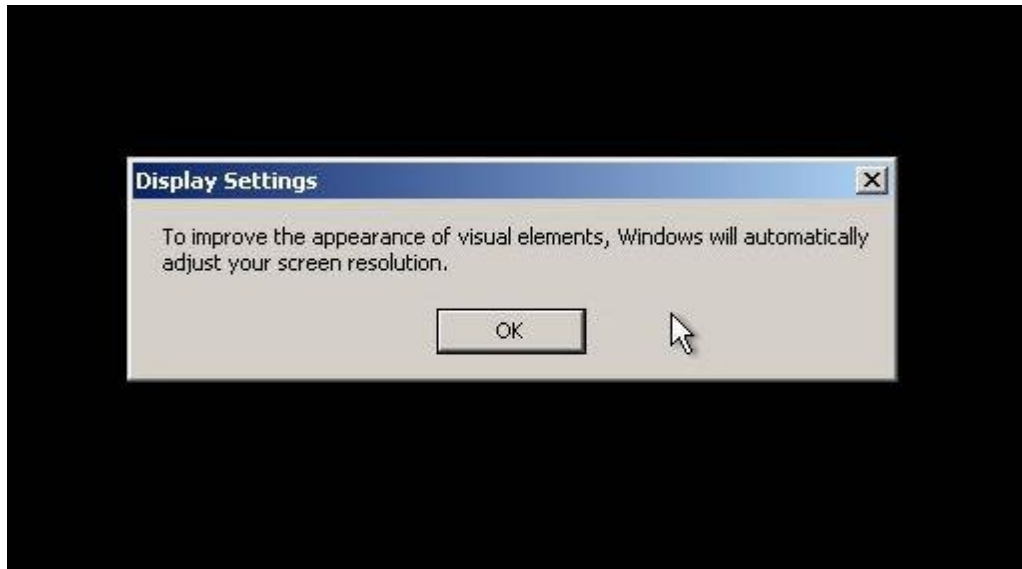
Computer name khi I duh duh I chhu ang a, I enter leh dawn nia.



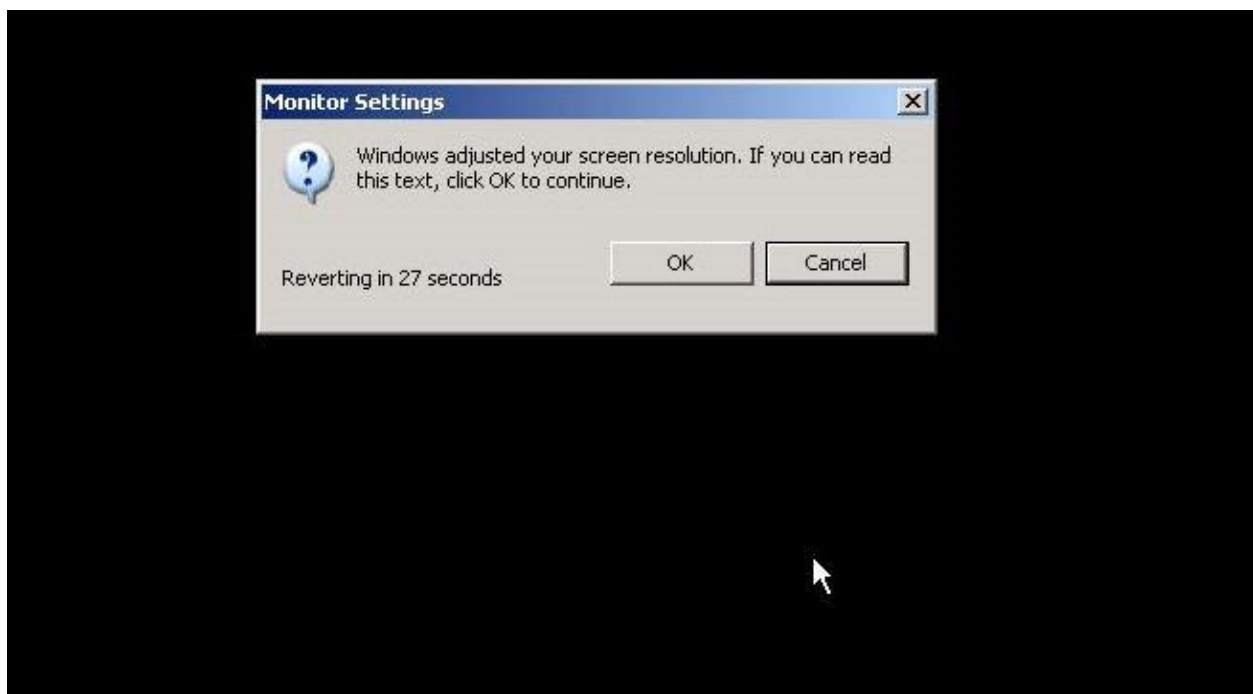
A chung a mi ang hi a lo lan hunah Date & Time hi set tha la, Time Zone ah hian I awmna azirin I thlang dawn nia. Mizoram a awm tan chuan New Delhi hi kan hmang mai thin. I zawh hnuah Enter leh ang che.



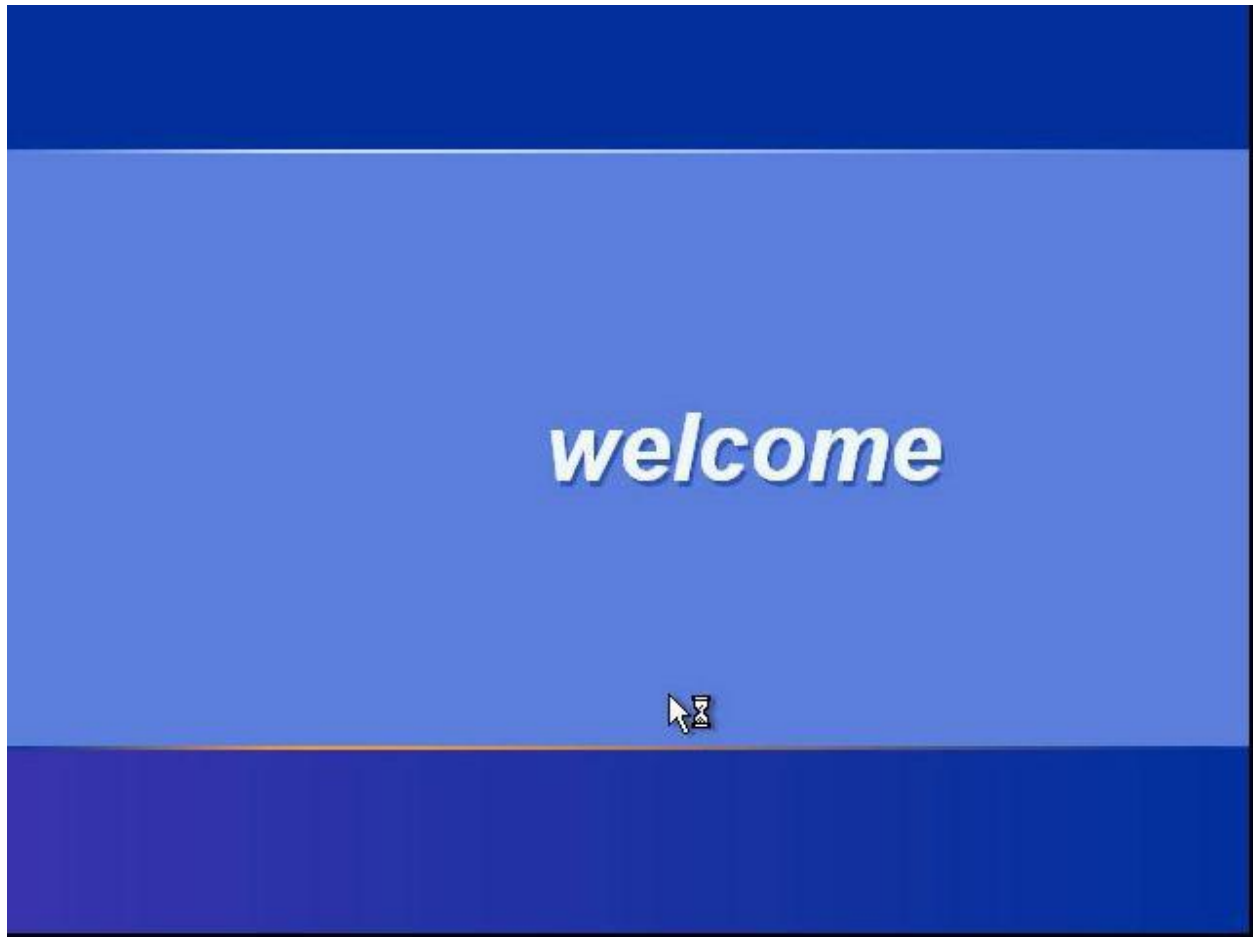
A chung a mi ang hi a lo lan chuan Next ah Enter leh tawp rawh.



A chung a mi ang hi a lan chuan OK ah click tur a ni.



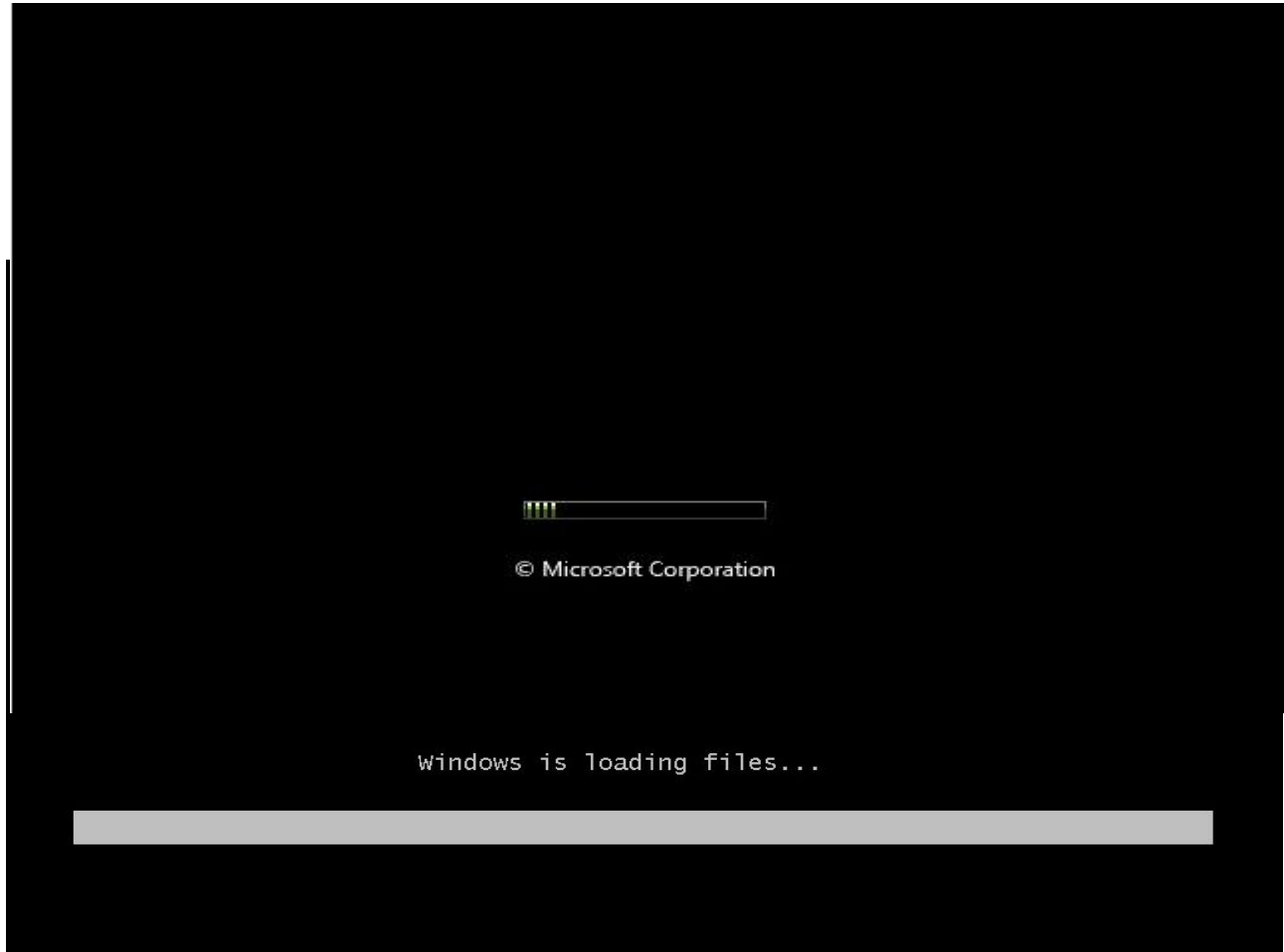
A chung a mi ang a rawn lan chuan OK click leh tur.



Kan zo fel ta der mai.... Hemi zawhah hi chuan I motherboard Driver kha a disc thun la, Autorun a rawn in play chuan Setup Driver ah khan kal tawp emaw, a Disk Drive kha hawng la, Setup.exe tihin emaw a lo awm mai ang. Motherboard Driver I install loh chuan Windows XP chauh I la load a, a lem a fiah tawk loh bakah Sound te, Network te I hmang thei lovang.

Windows 7 Installation

Window 7 kan install dawn chuan BIOS settings a kan sawi ang khi kan ti ve vek ang a, chumi zawhah Windows 7 Boot Disk kha DVD Drive ah kan thun ang a, computer kan restart ang a, Press any key tih a lo lan chuan kan duh duh kan hmet ve leh ang. Chumi zawhah hetiang hian a lo lang ang.

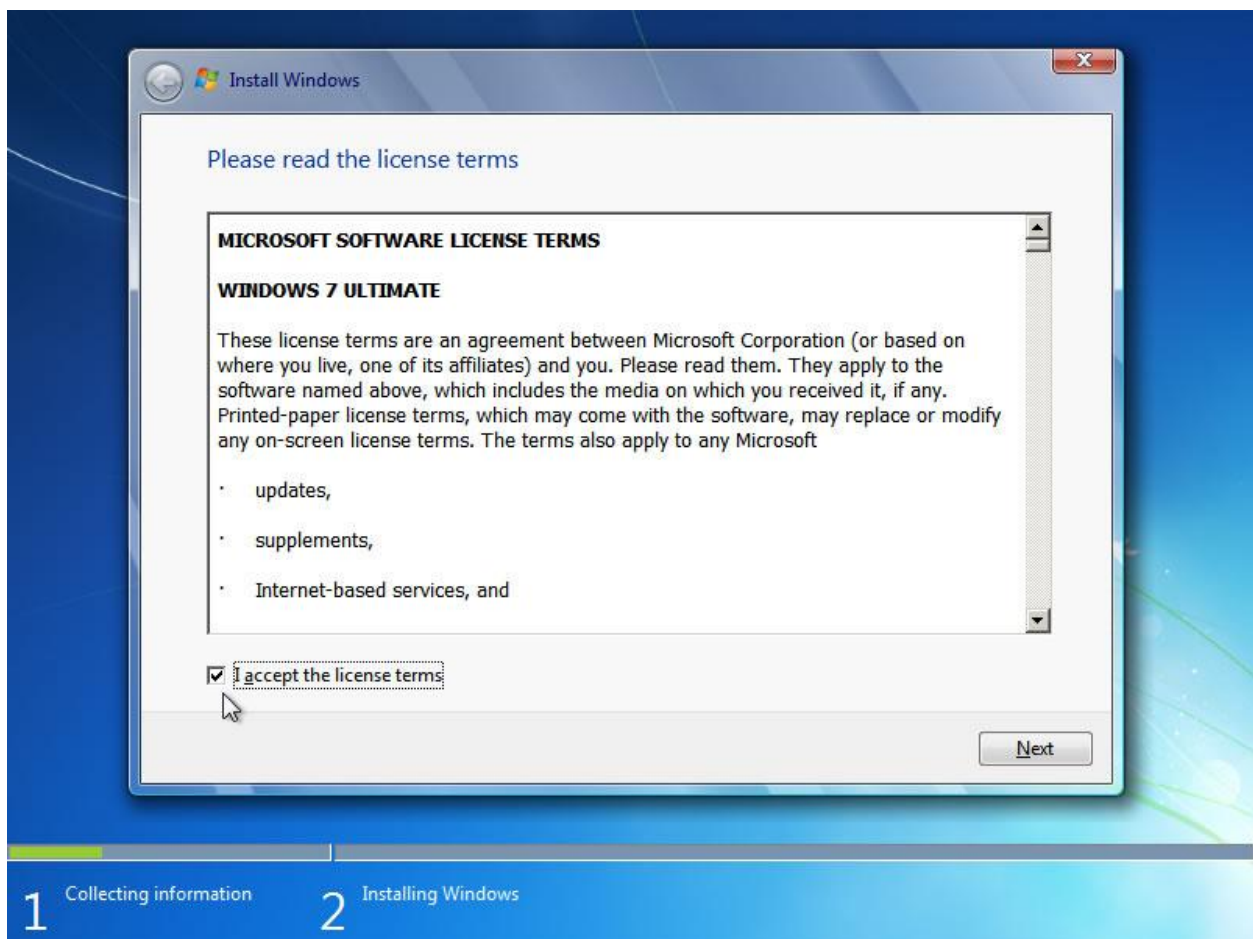
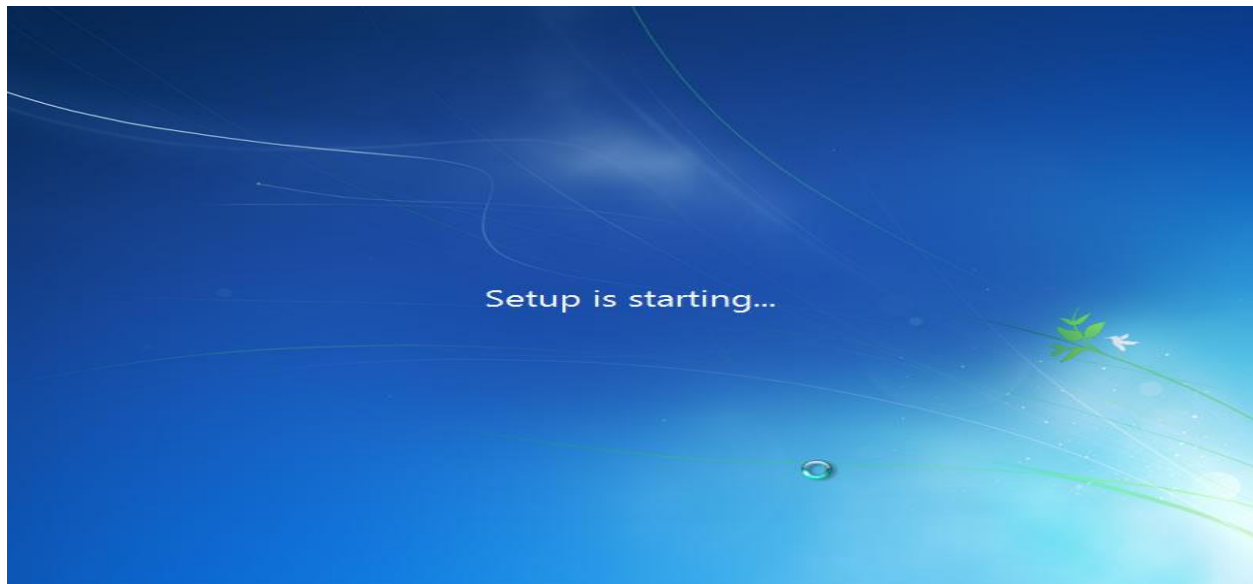




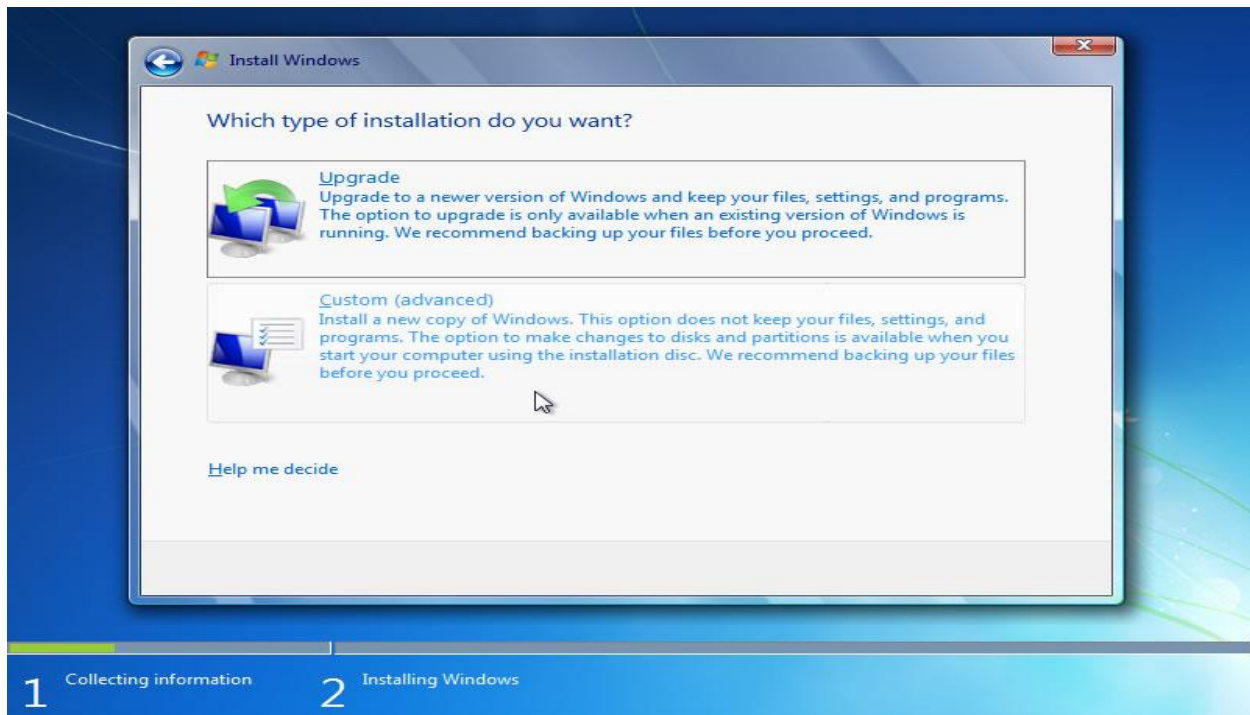
A chungang mi khi a lo lan chuan Next kan click ang



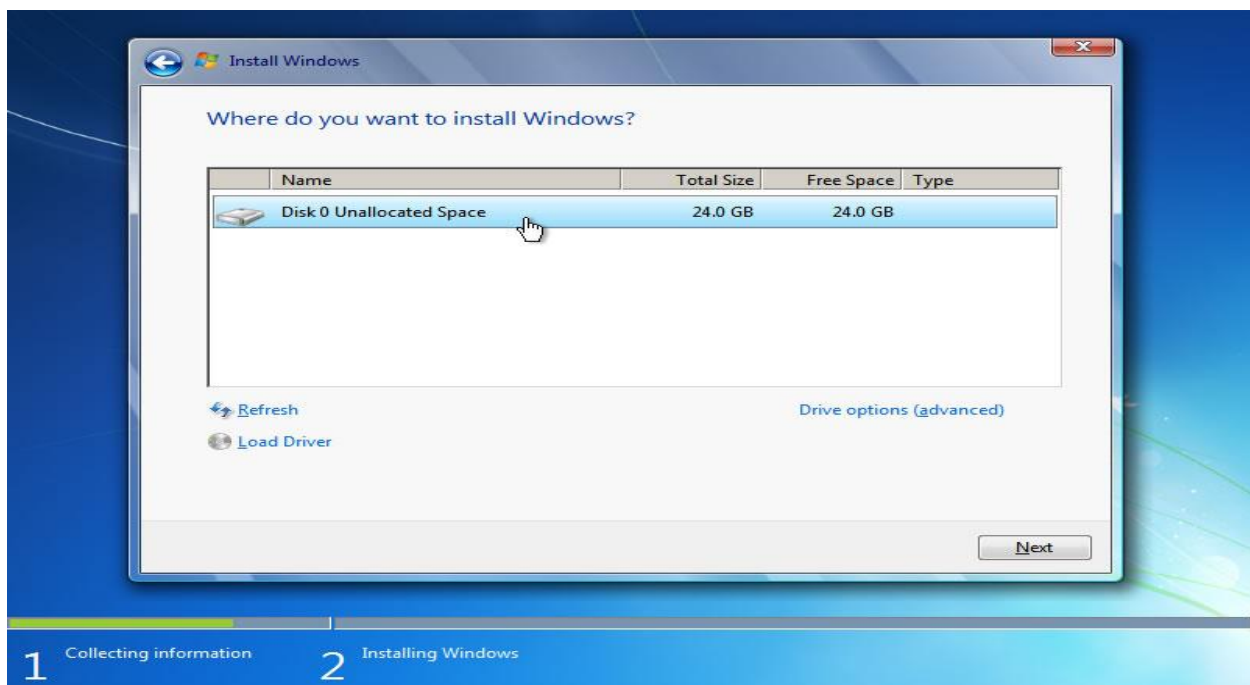
Install Now tihah khian kan click ang



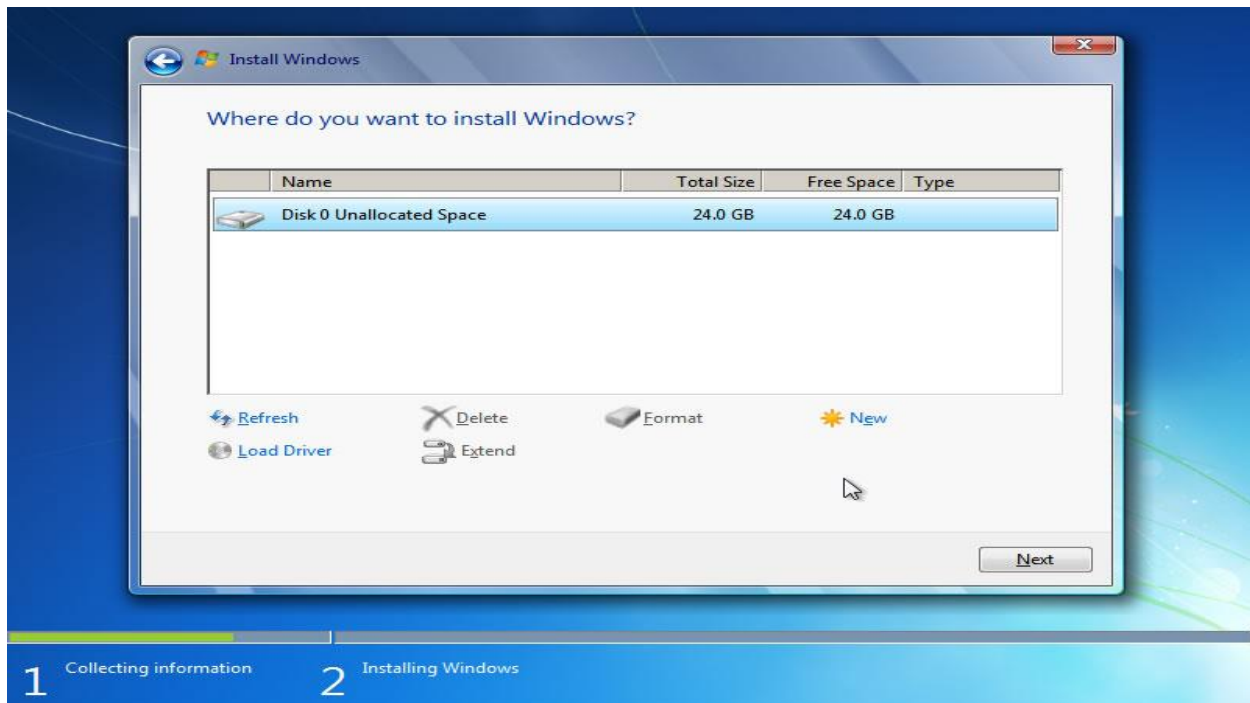
I accept the license terms tih a tick tur khi kan tick ang a, Next tih khi click theihin a lo nung ang a, kan click zeuh ang.



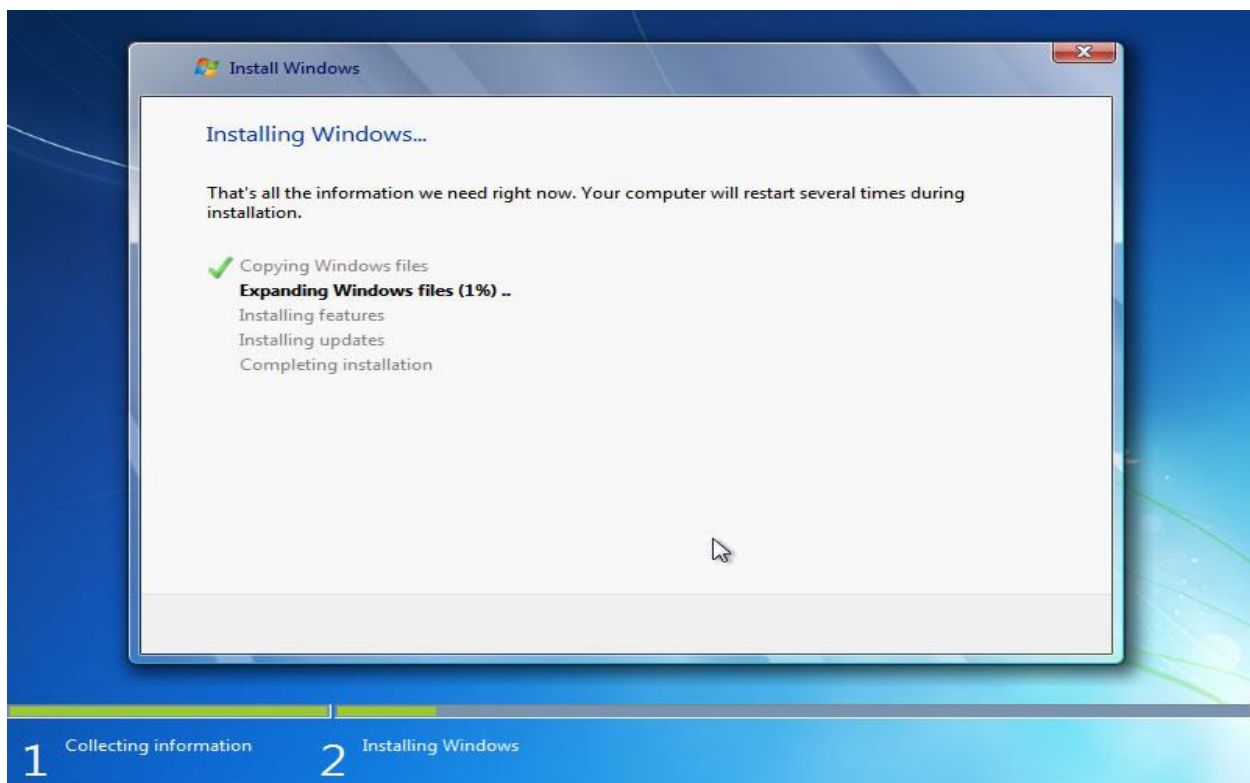
A chung a mi ang khi a lo lan chuan Custom (Advanced) khi kan thlang ang.



A chung a mi ang khi a lo lang ang a, partition I neih dan azirin Disk 0 Unallocated Space tih ang khi a dang a awm belh ang a, I C drive kha I thlang ang a, Drive Option ah khian I kal dawn nia.

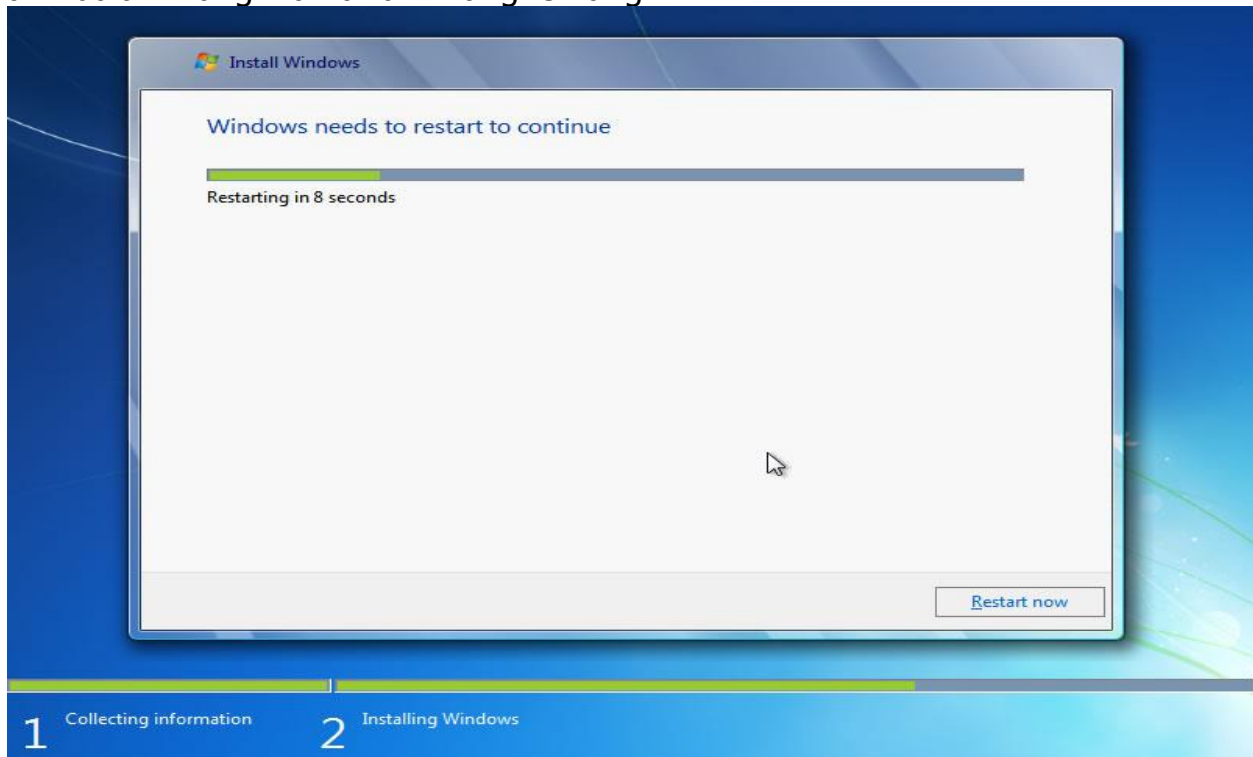


Format tih khi a I click dawn nia. Chuan a format zung zung ang a, a zawh veleh a hnuaia mi ang hian a rawn lang ang.



A chung a mi ang hi a rawn lan chuan nghah vang vang a ni tawh mai. A zawhah

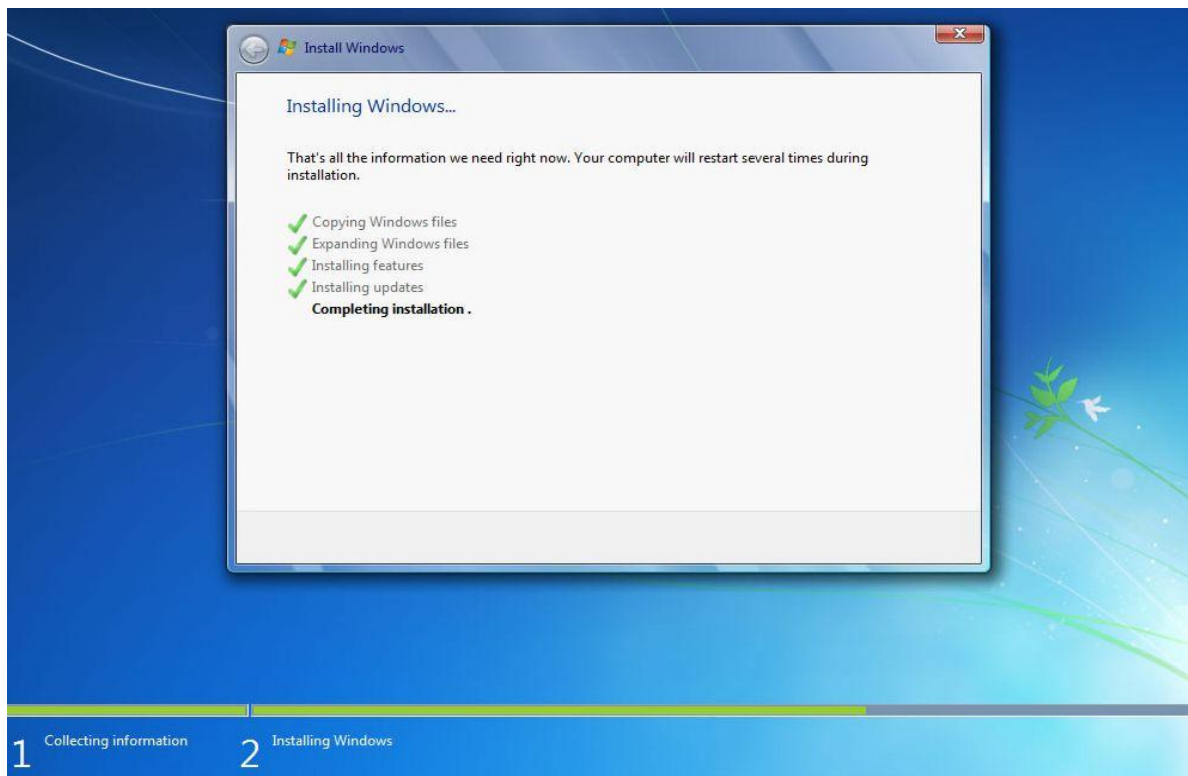
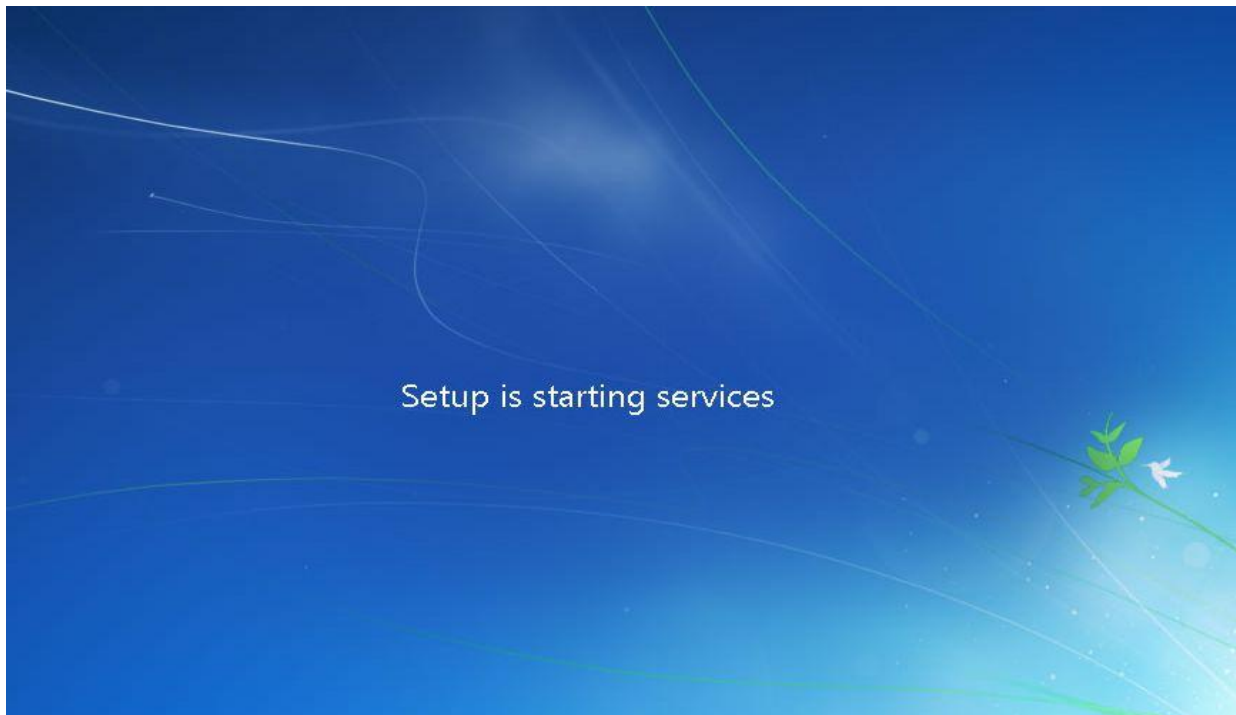
a hnuaia mi ang hian a rawn lang leh ang.

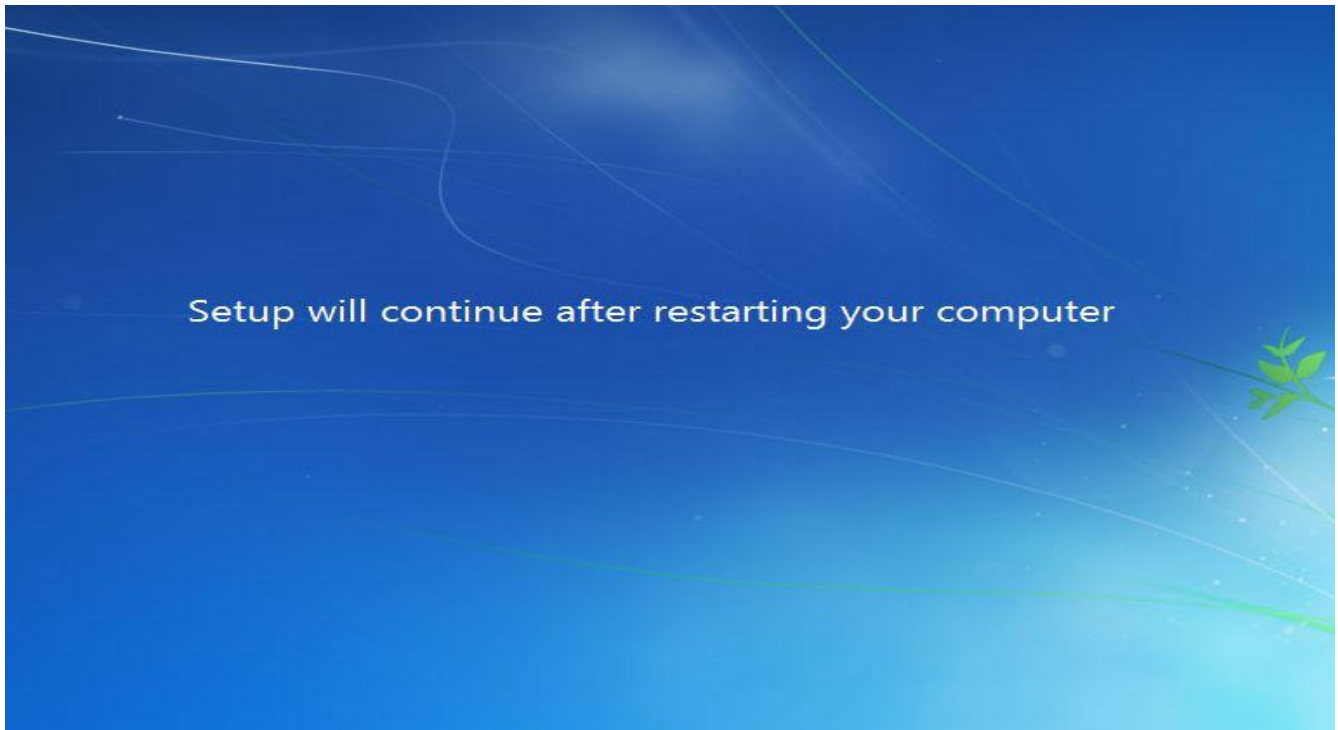


I computer a restart leh dawn a, I nghah peihloh chuan Restart Now khi I click dawn nia. A rawn nun leh khan Press any key a tih pawhin hmeh tawhloh tur a nih kha aw... Chuan a hnuaia mi ang hian a lo lang leh ang.

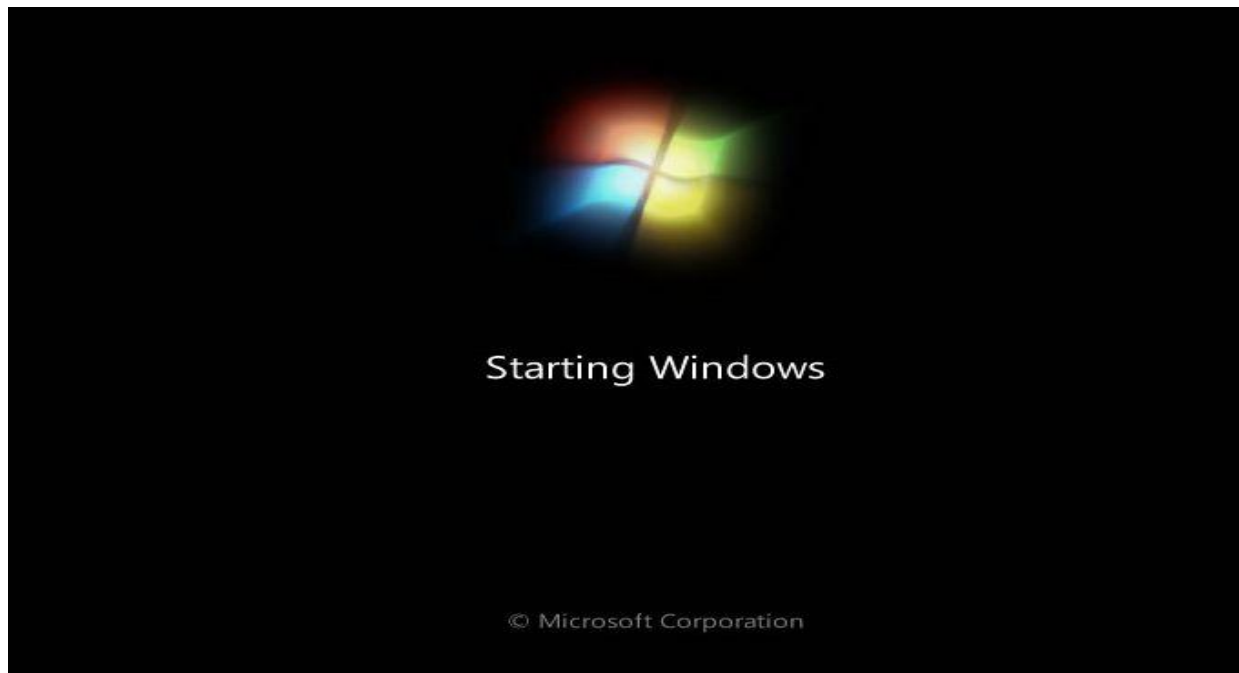


Lo nghak leh vang vang la, a hnuaia mi ang hian a lo lang leh ang.







A rawn in Restart leh ang a, a hnuaia mi ang hian a rawn lang ang.

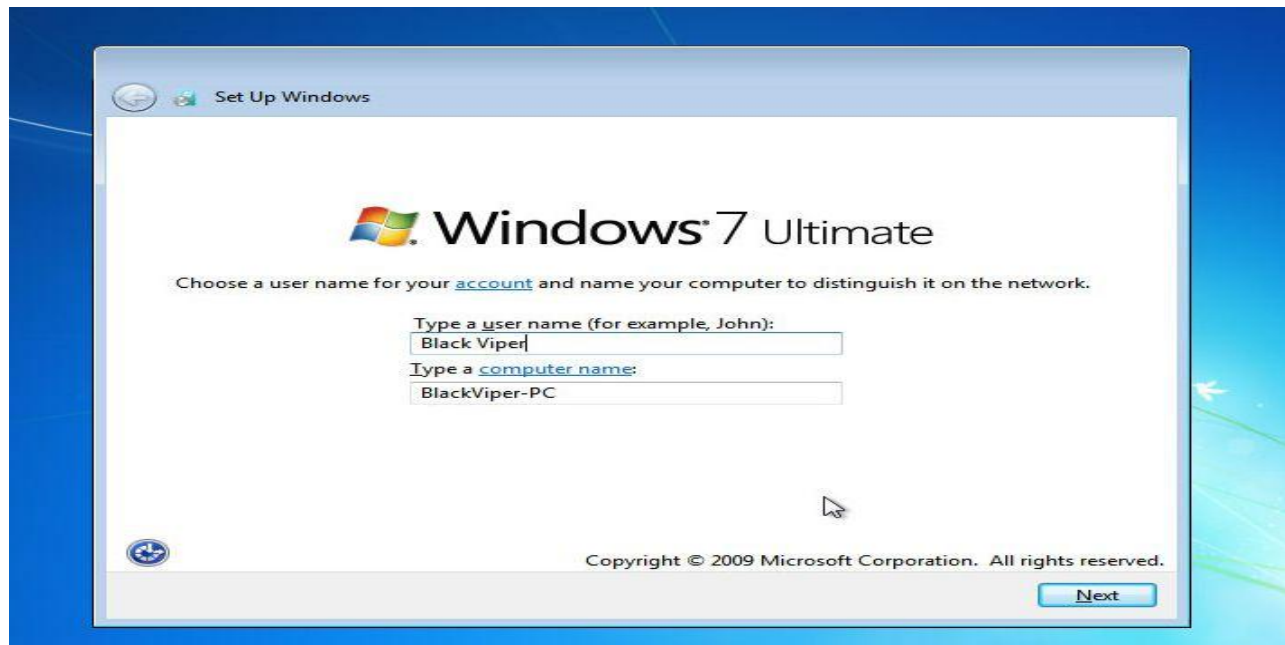


Setup is preparing your computer for first use

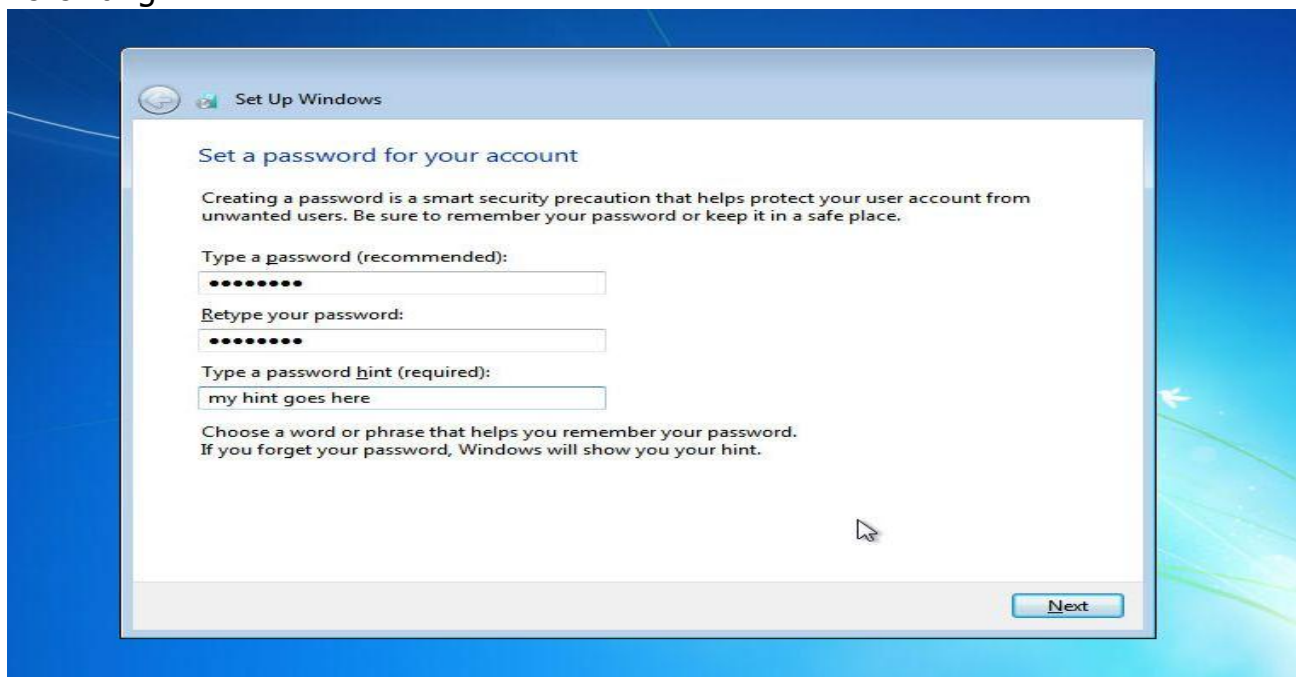


Setup is checking video performance





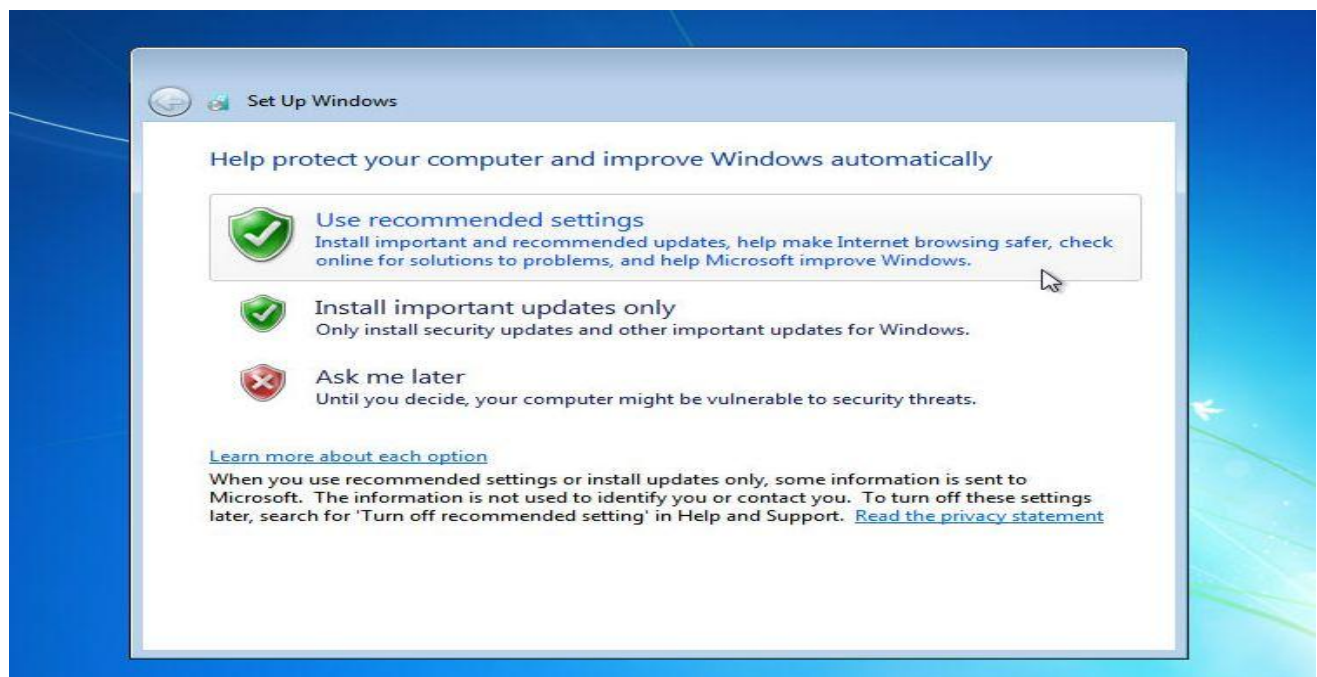
User name tih hnuaiah khian kan hming kan chhu lut ang a, Next kan click ang.



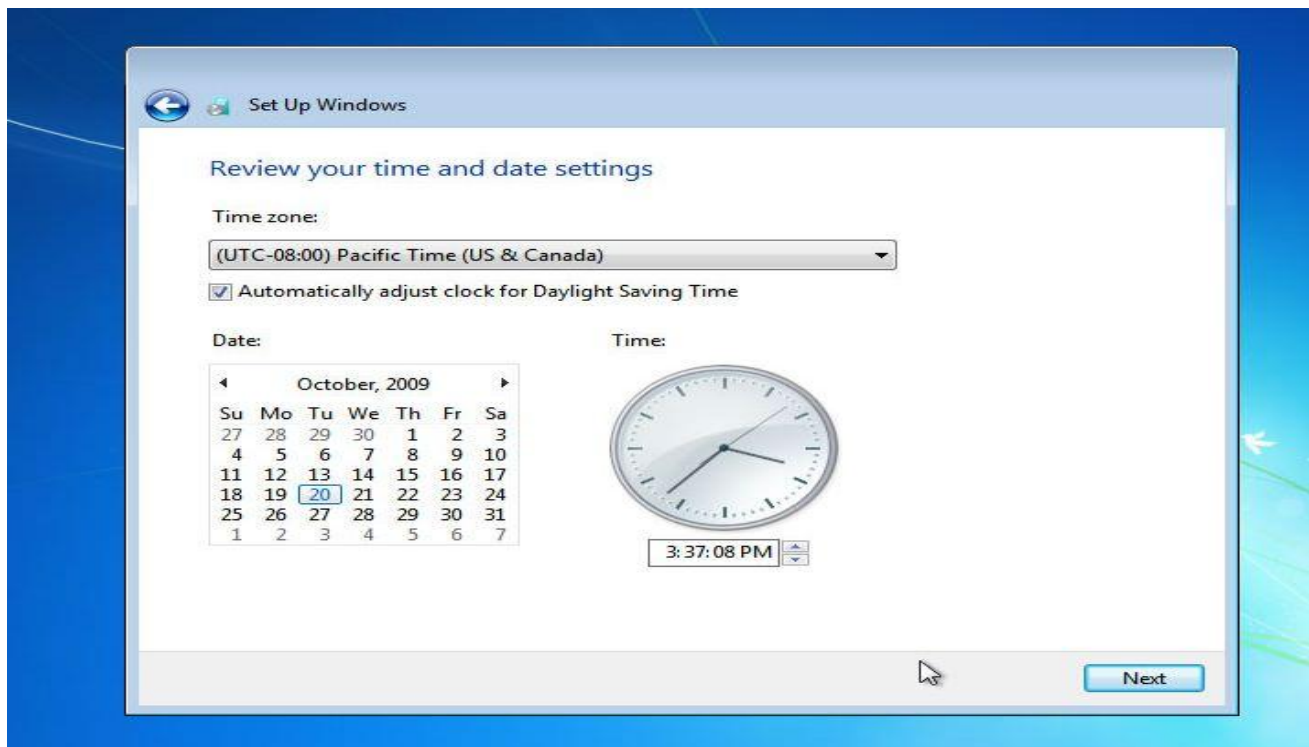
Password hi dah kher a ngai lemlo a, i duh chuan i dah thei thei bawk. I duh loh leh Next i click ang.



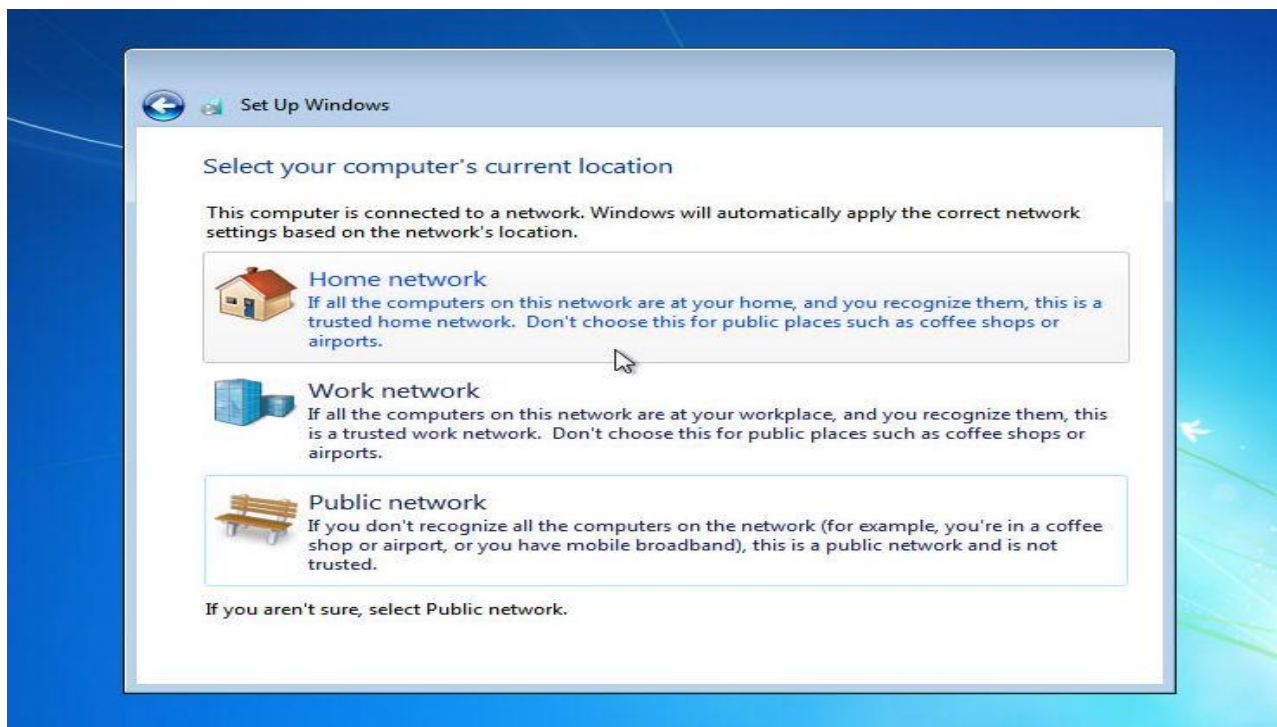
Product key I neih leh I chhu lut ang a, automatically activate ah khian I tick ang a, neih loh chuan Next ah click mai tur.



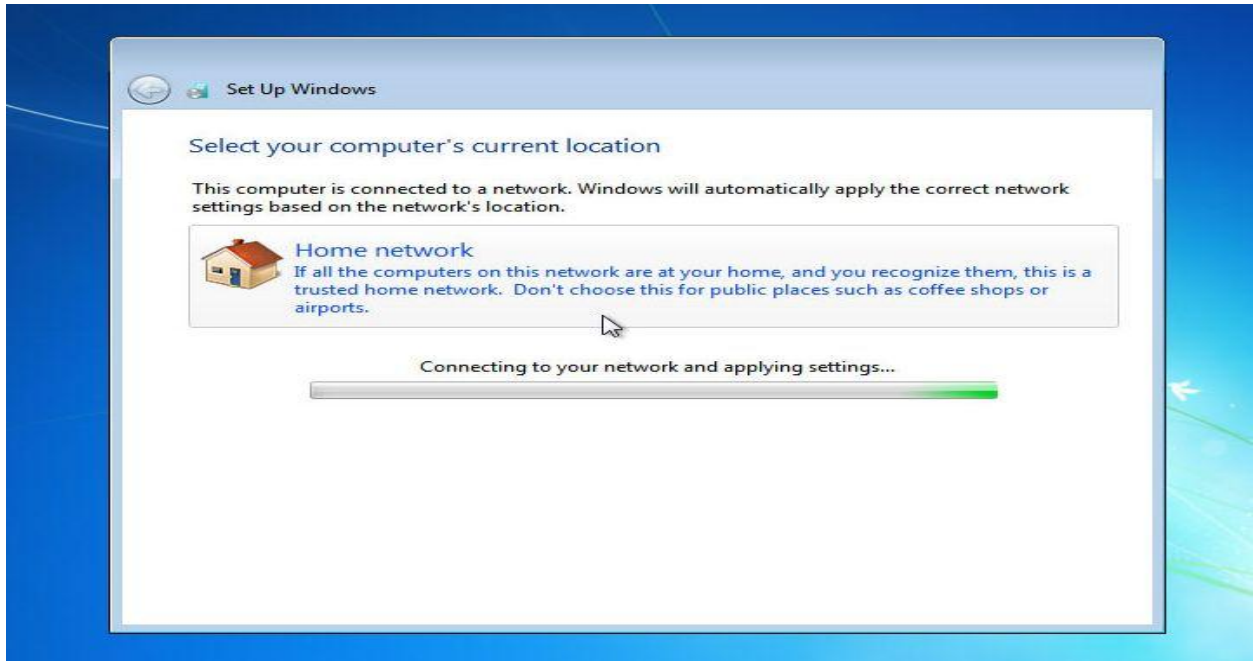
A chung a mi khi a lo lam chuan Use Recommended settings emaw Ask me Later khi click la.



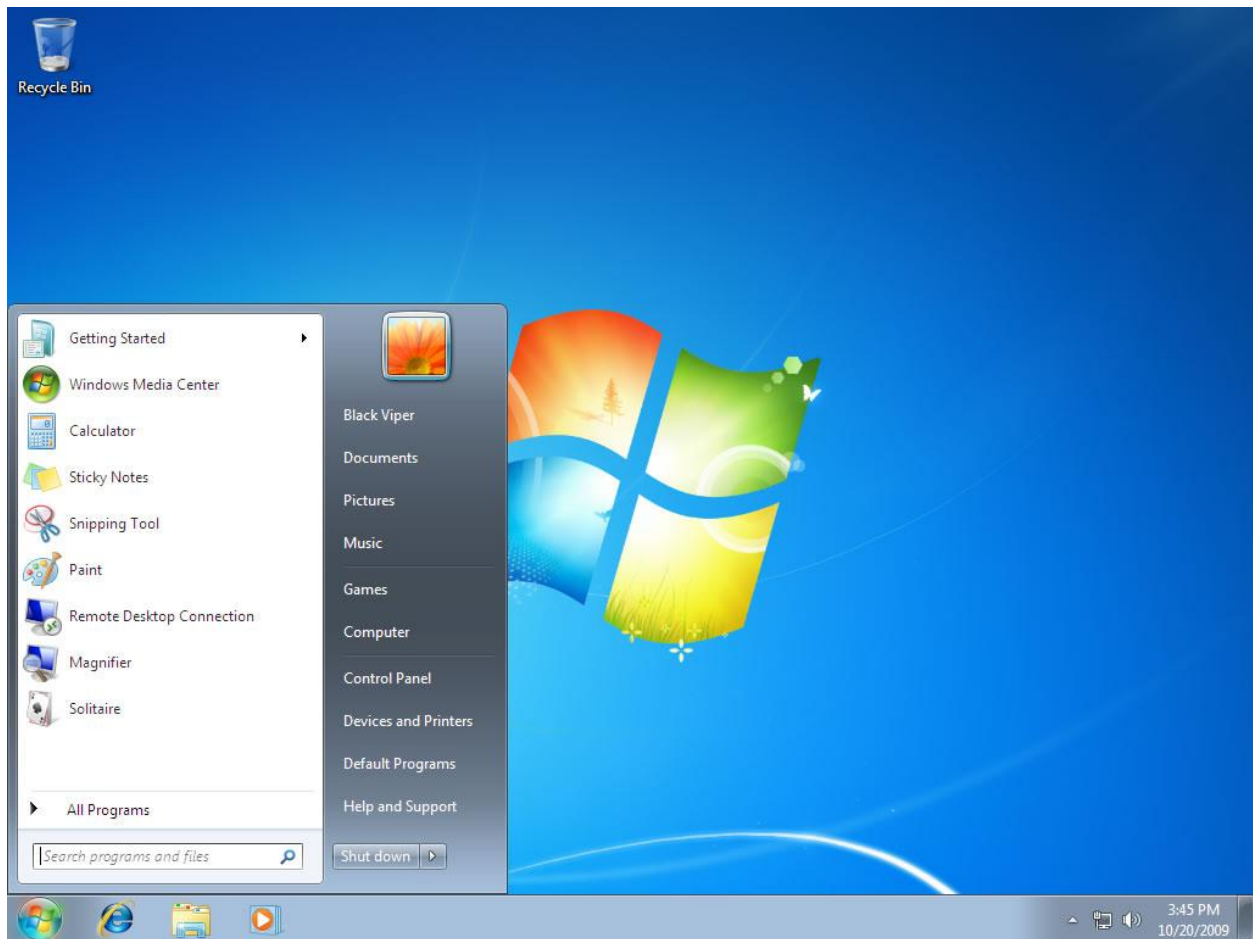
I awmna hmun milin time set tha la, I zawh ah Next click la.



Network I duh I thlang ang a, Home Network hi a him ber a, kei chuan ka hmang tlangpui.







I zo leh ta der mai.. Ti kha chuan Computer Hardware tlem azawng leh Windows load chu I thiam ve tak kha.. Thingpui in chungin Games han khel veng veng mai the le....

Part 4 : Troubleshooting

Computer chhiat a siamdan tur tlangpui sawi leh thuak thuak ang.

A hmasa in I computer ah Anti Virus tha tawk tak hmang ngei la ka duhpui khawp mai che a, a khat tawkin Disk Defragment te pawh hi ching zeuh zeuh la a tha khawp mai. Software mamawh zual pui chu www.zohuap.blogspot.in ah khan Essential Software for Computer User tih kha lo bih ve ang che.

Problem 1 : Computer nung theilo

Solve : Chhan hrang hrang a awm thei a, a hmasa berah chuan

- 1) CPU ah current a lut em en hmasa la, a lut lo a nih chuan Wall Outlet check la, a that tho si a, a luh loh chuan Cable emaw SMPS emaw check leh ang che.
- 2) Current a lut vek a, power I on khan a nung thei lo a nih chuan power switch check leh ang che.
- 3) I motherboard chhiat vang pawhin a awm thei bawk.

Problem 2 : Current a lut vek a, CPU pawh a on theih vek a, display a pe theilo. (Monitor a tha tho sia)

Solve : Hei pawh hi chhan hrang hrang a awm thei a, chungte chu

- 1) RAM kha phawi la, han hru fai deuh la, a slot te kha chhem fai deuh la, vuah leh rawh.
- 2) Graphic Card I hman chuan I VGA kha graphic card a port ah zawk khan I vuah em en la, a dik loh chuan vuah tha le hang che.
- 3) I graphic port a chhia a ni thei. Graphic card vuah chin teh.
- 4) A la that loh cheu chuan Motherboard leh Processor vang bawk a ni thei tho mai.

Problem 3 : Zan a han ON hian a ri ring thei lutuk.

Solve : Khawl a upat hian a tlangpuiin a ri a ring duh a, a kilhna ho kha han tight tha deuh la, a la reh loh chuan rubber emaw tight hnan la, a zia duh deuh.

Problem 4: Ka computer a sana hi set that pawhin a lo danglam leh ziah

Solve : CMOS battery vang a ni tlangpui. Sana zawrhna dawrah emaw computer part zawrhna dawrah Lithium battery phrek thlir thler duli tiat vel kha lei la, I thlak dawn nia.

Problem 5: Midang computer a movies en theih reng kan ta ah a en ve theih miah loh.

Solve : A codec I neih loh vang mai mai a ni hmel. Klite Codec Pack thar ber download in emaw VLC Media Player hman hian a play theih tlangpui.

Problem 6: Ka file duh deuh ka delete palh hlah mai a, lak let leh dan a awm em?

Solve : Awm tehreng e, recovery software chi hrang hrang a awm a, easus data recovery, recover for all, acronis disk director, recuva, undelete plus etc te hi hmang chin teh.